



Industrial Hydraulic Equipment

SINGLE ACTING CYLINDERS



- Rectangular spring for durability
- Cylinders come standard with 3/8" NPTF high flow couplers

Cylinder Capacity (tons)	Stroke (in)	Model Number	Collapsed Height (in)
2	3.07	H0203*	5.39
5	0.63	H0500	1.61
	1.00	H0501	4.58
	3.07	H0503	6.65
	5.08	H0505	8.70
	7.09	H0507	10.71
10	9.09	H0509	12.72
	1.00	H1001	3.62
	2.01	H1002	4.84
	4.02	H1004	6.85
	5.94	H1006	9.84
	7.95	H1008	11.85
	9.96	H1010	13.86
	11.97	H1012	15.87
15	14.02	H1014	17.72
	0.99	H1501	4.88
	2.01	H1502	5.87
	3.98	H1504	7.87
	5.87	H1506	10.67
	7.87	H1508	12.68
	9.88	H1510	14.69
	12.01	H1512	16.65
25	14.02	H1514	18.66
	1.00	H2501	5.38
	2.01	H2502	6.82
	3.94	H2504	8.78
	5.94	H2506	10.79
	7.95	H2508	12.80
	9.96	H2510	14.80
	12.24	H2512	16.73
30	14.25	H2514	18.74
	8.27	H3008	15.24
55	2.01	H5502	6.93
	3.98	H5504	8.94
	6.22	H5506	11.14
	10.25	H5510	15.20
75	13.27	H5513	18.15
	6.14	H7506	11.22
	13.11	H7513	19.37
100	2.01	H10002A	8.62
	6.61	H10006	14.06
	10.24	H10010	17.68

FLAT BODY CYLINDERS



- Great for areas for low clearance
- Maximum working pressure 10,000 psi / 700 bar

Cylinder Capacity (tons)	Stroke (in)	Model Number	Collapsed Height (in)
5	0.24	HF0503**	1.26
10	0.43	HF1005	1.69
20	0.43	HF2005	2.01
30	0.51	HF3005	2.31
50	0.63	HF5006	2.64
75	0.63	HF7506	3.13
100	0.63	HF10006	3.37
150	0.63	HF15006	3.94

FLAT BODY CYLINDER KITS



- Various height magnetic adapters
- Carrying case
- Perfect for low clearance areas needing a little height boost
- Maximum working pressure 10,000 psi / 700 bar

Cylinder Capacity (tons)	Stroke (in)	Model Number	Adapter	Adapter Dimensions (in)
5	0.24	HF0503B	I	0.25
			II	0.5
			III	1
			IV	1.25
10	0.43	HF1005B	I	0.39
			II	0.79
			III	1.57
20	0.43	HF2005B	I	0.39
			II	0.79
			III	1.57
30	0.51	HF3005B	I	0.39
			II	0.79
			III	1.57
50	0.63	HF5006B	I	0.39
			II	0.79
			III	1.57

ALUMINUM CYLINDER KITS



- Up to 60 percent lighter than comparable tonnage steel cylinders
- Convenient carry handle
- Hard anodized aluminum piston rod

Cylinder Capacity (tons)	Stroke (in)	Model Number	Collapsed Height (in)
20	1.97	HU2002T	6.85
	3.94	HU2004T	8.82
	5.91	HU2006T	10.79
30	2.00	HU3002	6.50
	4.00	HU3004	8.50
	6.00	HU3006	10.50
50	2.00	HU5002	6.50
	4.00	HU5004	8.50
	6.00	HU5006	10.50
	10.00	HU5010	14.50
75	4.00	HU7504	8.50
	6.00	HU7506	10.50
100	2.00	HU10002	6.50
	4.00	HU10004	8.50
	6.00	HU10006	10.50
	10.00	HU10010	14.50

LOW PROFILE CYLINDERS



- Compact design for use in confined spaces
- Return spring ensures quick retraction
- Chrome plated rod helps prevent scratching and corrosion
- Ram end is grooved to reduce load slippage
- Maximum working pressure 10,000 psi / 700 bar

Cylinder Capacity (tons)	Stroke (in)	Model Number	Collapsed Height (in)
10	1.50	HL1001	3.48
20	1.75	HL2002	3.90
30	2.44	HL3002	4.61
50	2.36	HL5002	4.80
100	2.24	HL10002	5.55

HOLLOW HOLE CYLINDERS



- Ideal for pulling and pushing applications
- Heavy duty compression spring
- XT cylinders do not come with ram internal threads

Cylinder Capacity (tons)	Stroke (in)	Model Number	Collapsed Height (in)
12	0.31	HC1201T*	2.36
	1.61	HC1202T*	4.74
	1.61	HC1202XT*	4.74
	2.99	HC1203XT	7.24
20	2.01	HC2002T	6.38
	6.06	HC2006T	12.05
30	2.52	HC3002T	7.05
	6.11	HC3006T	13.02
60	3.00	HC6003T	9.77
	6.00	HC6006T	12.76
100	3.00	HC10003T	10.00
120	0.6	HVSP120	3.64

LOCK NUT CYLINDERS



- Single acting with mechanical safety lock nut
- Supports load for extended periods without hydraulic pressure
- Load return
- Ideal for lifting and holding loads

Cylinder Capacity (tons)	Stroke (in)	Model Number	Collapsed Height (in)
55	1.97	HLN5502	6.5
	3.94	HLN5504	8.4
	5.91	HLN5506	10.4
	7.87	HLN5508	12.4
	9.84	HLN5510	14.3
	11.81	HLN5512	16.3
100	1.97	HLN10002	7.4
	3.94	HLN10004	9.3
	5.91	HLN10006	11.3
	7.87	HLN10008	13.3
	9.84	HLN10010	15.2
	11.81	HLN10012	17.2

HIGH TONNAGE CYLINDERS



- Industrial hard chrome plated ram prevents scratching and corrosion
- Base mounting holes standard on all models
- Ram wiper seals out dirt and contamination

Cylinder Capacity (tons)	Stroke (in)	Model Number	Collapsed Height (in)
Single Acting Cylinder			
150	5.91	HG15006	11.65
200	5.91	HG20006	12.44
	7.87	HG2008	14.41
500	5.91	HG50006	20.43
Double Acting Cylinder			
150	5.91	HDG15006	11.65
200	5.91	HDG20006	12.44
	11.81	HDG20012	18.35
300	5.91	HDG30006	16.22

DOUBLE ACTING CYLINDERS



- One piece high grade alloy bearing for side load protection and long life
- Ideal for pushing and pulling
- Retracts using hydraulic power for faster operation
- 55-100 Tons models are equipped with carrying handle
- Maximum working pressure: 10,000 psi / 700 bar

Cylinder Capacity (tons)	Stroke (in)	Model Number	Maximum Cylinder Capacity		Collapsed Height (in)
			Push (tons)	Pull (tons)	
10	10.04	HD1010	11.4	3.8	16.14
	11.97	HD1012			18.03
25	5.90	HD2506	25.7	13.4	10.6
30	8.15	HD3008	32.9	16.2	15.31
	14.49	HD3014			21.65
55	6.18	HD5506	55.7	16.2	13.03
	13.19	HD5513			20.04
	20.12	HD5520			28.86
75	6.10	HD7506	81.7	25.9	13.70
	13.11	HD7513			20.71
100	6.57	HD10006	104.4	48.6	14.06
	10.13	HD10010			17.7
	13.11	HD10013			20.63
	18.15	HD10018			27.05
200	6	HD20006	221	112.5	16.94
	13	HD20013			23.94
	21	HD20024			36.13
300	6	HD30006	354.6	190	19.13

METAL AIR PUMPS



- Used with single acting cylinder
- High strength reinforced alloy reservoir is lightweight and corrosion resistant
- Suggested air pressure range: 110-175 psi. / 7.5-12 bar
- PA2000 offers a turbo function

Usable Oil Capacity (in³)	Model Number	Pressure Rating (psi)	Oil Output Flow Rate (in³/min)	
			No Load	Load
91.5	PA1500	10,000	66	11
91.5	PA1500A		66	
122.1	PA2000		65	12
231.9	PA3801		65	11
460.6	PA7550		65	

REMOTE CONTROL AIR PUMPS



- Used with single acting cylinder
- 10 ft. hand held remote allows user to operate the air pump from a safe distance

Usable Oil Capacity (in³)	Model Number	Pressure Rating (psi)	Oil Output Flow Rate (in³/min)	
			No Load	Load
91.5	PA1500L	10,000	61	10
231.9	PA3801L		65	11
460.6	PA7550L		65	11

DOUBLE ACTING AIR PUMPS

- Used with double acting cylinders
- PA1500M offers a 4-way control valve for operation of double acting cylinders



Usable Oil Capacity (in³)	Model Number	Pressure Rating (psi)	Oil Output Flow Rate (in³/min)	
			No Load	Load
91.5	PA1500M	10,000	66	11
231.9	PA3801M		65	
460.6	PA7550M		65	

* These cylinders come with the CRZ14F coupler

** These cylinders come with the CR38F coupler

ALL POSITION AIR PUMPS



- Used with single acting cylinders
- Pump can work in any position
- Mounting plate allows for the pump to be securely fastened

Usable Oil Capacity (in ³)	Model Number	Pressure Rating (psi)	Oil Output Flow Rate (in ³ /min)	
			No Load	Load
36.6	PA600	10,000	61	9
	PA600H			

ROTARY AIR PUMPS



- Two speed operation
- Pressure Rating 10,000 psi

Motor Size (hp)	Usable Oil Capacity (gal)	Model Number	Oil Output Flow Rate	
			1st Stage (in³/min)	2nd Stage (in³/min)
For Single Acting Cylinder Model				
1.7	1	PARD1701	313	22
	3	PARD1703		
			PAR1703	417
4	1	PARD4001	465	70
	3	PARD4003		
			PAR4003	512
For Double Acting Cylinder Model				
1.7	3	PARM1703	417	22
4		PARM4003	512	70

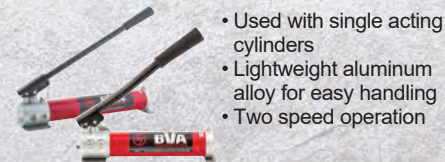
SINGLE SPEED HAND PUMPS



- Used with single acting cylinders
- All metal reservoirs resist cracks and leaks
- Internal pressure relief valve

Usable Oil Capacity (in ³)	Model Number	Pressure Rating (psi)	Oil Displacement per Stroke
36.5	P601S	10,000	0.15
67.0	P1201S		0.13

TWO SPEED ALUMINUM HAND PUMPS



- Used with single acting cylinders
- Lightweight aluminum alloy for easy handling
- Two speed operation

Usable Oil Capacity (in ³)	Model Number	Pressure Rating	
		1st Stage (psi)	2nd Stage (psi)
21.4	P350	200	10,000
61.0	P1000		

TWO SPEED HAND PUMPS



- All metal reservoirs resist cracks and leaks
- Two speed operation reduces user fatigue
- Load release valve for single acting cylinder usage

Usable Oil Capacity (in ³)	Model Number	Oil Displacement per Stroke	
		1st Stage (in ³)	2nd Stage (in ³)
67.0	P1201	0.81	0.14
122.0	P2001		
128.0	P2301		
250.0	P4301		
476.0	P8701	7.71	0.29

LOW PRESSURE HAND PUMP



- Lightweight and portable for use with punch drivers
- Rugged steel pump with chrome handle
- Single speed
- Mounting bracket for easy, permanent mounting
- Maximum working pressure 7,200 psi

Usable Oil Capacity (in ³)	Model Number	Oil Displacement per Stroke (in ³)	Oil Outlet Port
14.7	P240L	0.09	1/4" - 18 NPTF

DOUBLE ACTING HAND PUMPS



- A 4-way control valve for operation of double acting cylinders
- Two speed operation

Usable Oil Capacity (in ³)	Model Number	Oil Displacement per Stroke	
		1st Stage (in ³)	2nd Stage (in ³)
128.0	P2301M	0.81	0.14
250.0	P4301M	0.81	0.14
476.0	P8701M	7.31	0.29

LIGHT WEIGHT E-PUMP



Usable Oil Capacity (gal)	Model Number	Oil Output Flow Rate		Valve Type	Voltage (50/60Hz)
		1st Stage (in ³ /min) @ 200PSI	2nd Stage (in ³ /min) @ 1000PSI		
1.0	PU20DMP01B	133 @ 200 PSI	28 @ 10,000 PSI	2-way, 2-position	120 VAC
	PU20M3N01B			3-way, 3-position	
	PU20M4N01B			4-way, 3-position	
2.5	PU55DMP025B	439 @ 700 PSI	64 @ 10,000 PSI	2-way, 2-position	
	PU55M3N025B			3-way, 3-position	
	PU55M4N025B			4-way, 3-position	
	PU55S3N025B			3-way, 3-position	
	PU55S4N025B			4-way, 3-position	
	PU55T1W025B			Torque Wrench Valve	
	PU55T4W025B			Post Tensioning Valve	
	PU55P2V025B-A				

GAS PUMPS WITH HONDA ENGINE



- Industrial grade Honda gas engines
- Manual control valve for use with single or double acting applications
- Two speed pump operation
- Features a sturdy protective roll cage

Model Number	Motor Size (hp)	Usable Oil Capacity (gal)	Max. Pressure Output (psi)
PG70M3N05	5.5	5	10,000
PG70M4N05			
PD80S4L10	7.3	10	
PG90S3L10	10.2		
PG90S4L10			

ELECTRIC PUMPS WITH AUTO RETURN VALVE



- Quiet operation meets OSHA regulations (80dBA)
- Best suited for punching, crimping, and cutting applications
- 2 speed operation
- Full load starting capabilities
- Internal filter

Motor Size (hp)	Usable Oil Capacity (gal)	Model Number	Pressure Rating	
			1st Stage (psi)	2nd Stage (psi)
0.5	1.0	PE30DMP01A	350	10,000
	2.0	PE30DMP02A	380	
SOLENOID				
0.5	1	PE30DSP01A	350	10,000
1	2	PE40DSP02A	700	
1.5	3	PE50DSP03A		

ELECTRIC PUMPS



- Quiet operation meets OSHA regulations (80dBA)
- 2 speed operation
- Full load starting capability
- Internal filter
- Remote pendant available
- 10, 15 and 25 gallon reservoirs are available

Use with Cylinder	Motor Size (hp)	Usable Oil Capacity (gal)	Model Number
Single Acting	0.5	1	PE30M3N01A
	1.0	2	PE40M3N02A
	1.5	3	PE50M3N03A
Double Acting	0.5	1	PE30M4N01A
	1.0	2	PE40M4N02A
	1.5	3	PE50M4N03A

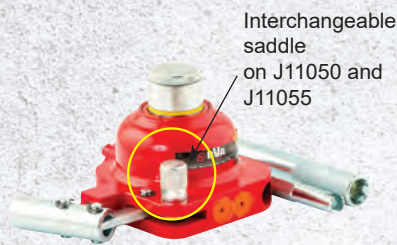
ELECTRIC PUMPS WITH SOLENOID VALVE



- Quiet operation meets OSHA regulations (80dBA)
- Ideal for applications where a remote control is required
- 2 speed operations
- Full load starting capabilities
- Internal filter
- 10 ft. hand held remote controls the solenoid valve
- 10, 15 and 25 gallon reservoirs are available

Use with Cylinder	Motor Size (hp)	Usable Oil Capacity (gal)	Model Number
Single Acting	0.5	1	PE30S3N01A
	1	2	PE40S3N02A
	1.5	3	PE50S3N03A
Double Acting	0.5	1	PE30S4N01A
	1	2	PE40S4N02A
	1.5	3	PE50S4N03A

MINI JACKS



Interchangeable saddle on J11050 and J11055

- Low profile mini jack
- Pocket size and lightweight

Capacity (tons)	Model Number	Min. Height (in)	Max. Height (in)
5	J11050	2.37	3.13
5	J11055	3.37	4.88
10	J11100	4.75	6.25
20	J11200	5.13	6.75

AIR/MANUAL BOTTLE JACKS



- Effortless air operation will greatly reduce operator fatigue
- All air bottle jacks have chrome plated rams

Capacity (ton)	Model Number	Minimum Height (in)	Maximum Height (in)
12	J18122	9-1/2	18-1/2
20	J18202	9-3/4	18-3/4
30	J18302	11	18
50	J18502	12	19
100	J18992	12	18-1/8

MANUAL BOTTLE JACKS



- Fabricated from hard-cast steel with heat-treated critical stress areas
- A wide, rugged base provides stability and strength

Capacity (ton)	Model Number	Minimum Height (in)	Maximum Height (in)
12	J10125	9-1/2	18-1/8
	J10129	6	10-1/8
20	J10205	9-1/2	18-1/8
	J10209	6-1/2	11-1/4
30	J10300	11	18
50	J10500	12	19

SHOP PRESSES



- Heavy steel welded construction
- Multi-position bed for work height adjustment
- Ideal for the removal or installation of gears, universal joints, pulleys, wrist pins, and other press jobs
- Excellent for bending, bonding, or straightening applications

Capacity (tons)	Model Number	Pump Type	Cylinder Stroke (in)
25	IMP2506	Manual	6
	IAP2506	Air	
	IAP5506	Electric	
55	IMP5506	Manual	13
	IAP5513	Air	
	IEP5513	Electric	
100	IEP10010	Electric	10

55 TON SHOP PRESS WITH MOVABLE WORK HEAD

Capacity (Tons)	Model Number	Pump Type	Cylinder Stroke (In)
Single Acting 55 Ton Capacity			
55	IMPR5506	Manual	6
	IAPR5506	Air	
	IEPR5506	Electric	
	IAPR5513	Air	13
	IEPR5513	Electric	
	IEPRS5513	Electric /Solenoid	
Double Acting 55 Ton Capacity			
55	IAPDR5506	Air	6
	IEPDR5513	Electric	13
	IEPDRS5513	Electric /Solenoid	

- AP100 Arbor plate for 100 Ton Shop Press
- CS25: 25 Ton Shop Press Accessory Kits
- CS55: 55 Ton Shop Press Accessory Kits



MAINTENANCE KITS



J50100



J50200

- Kits are portable for easy use in the plant or on the job site
- Custom fitted, durable storage cases
- 10 Ton set has wheel for easy movement
- Designed for applications of pushing, spreading, pressing, and more

Capacity (tons)	Pump Capacity (psi)	Model Number	Number of attachments
10	10,000	J50100	13
20		J50200	16

SPREADERS



SR07



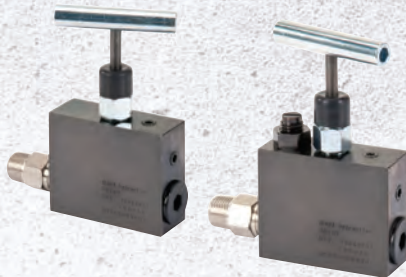
SR05

SR10

- Designed to work in confined working space
- Ideal for wedging, prying, and opening
- High strength forged steel
- Spring return for easy operation

Cylinder Capacity (tons)	Model Number	Cylinder Effective Area (in ²)	Oil Capacity (in ³)
0.5	SR05	1.22	0.58
0.75	SR07	2.24	5.25
1	SR10	1.09	0.86

MANUAL OPERATED CHECK VALVES



- Mounted in line to a cylinder and will hold pressure in the cylinder in the event of pressure loss in the system. Pressure is manually released.

Valve Type	Model Number	Ports
Manual Operated Check Valve	CVM3	3/8"-18NPTF
Manual Operated Check With High Pressure Bypass	CVMS3	
Pilot Operated Check Valve	CVP3	
Counter Balance Valve	CVBL3	

PRESSURE SWITCH



- Automatically shuts off electric pump when predetermined system pressure is reached

Model Number	Adjustable Pressure Range	Electrical Rating	Port Size
CVS1	1000~10150 psi	15 amp @ 250V max	1/4"-18NPTF

HYDRAULIC OIL



- High grade hydraulic oil

Volume (gal)	Model Number	ASTM Grade
1	FJZ01	215

CYLINDER BASES



For use with Cylinder Capacity (tons)	Model Number
5	CB05
10	CB10
15	CB15
25	CB25
55	CB55

FOOT PEDAL



FP2

- For hands free pump operation
- Can be used with all pumps equipped with solenoid valves.
- Foot controls on 10' cord. This option replaces the hand controls on Solenoid Operated Models

PRESSURE GAUGES



Gauge Type	Model Number	Thread (in)
Dry	GD2514	1/4"-18NPTF
	GD4014	
	GD4012	1/2"-14NPTF
Wet	GW2514	1/4"-18NPTF
	GW4014	
	GW4012	1/2"-14NPTF

PRESSURE GAUGE ADAPTERS



CF3814



CF3812



CF3812E



CF4514

Model Number	Gauge Port	Male End	Female End	Overall Length (in")
CF3814	1/4"-18NPTF	3/8"-18NPTF	3/8"-18NPTF	5.12
CF4514				3.07
CF3812	1/2"-14NPTF			2.81
CF3812E				6.1
CF14A	1/4"-18NPTF	1/4"-18NPTF	1/4"-18NPTF	1.75

SPIDER VALVES



- Controls the flow of 5 hydraulic hoses from one central location
- Sturdy design for long product life
- Convenient carry handle

Model Number	Number of Ports	Port Size
FCMH6	6	3/4"-18NPTF

HYDRAULIC COUPLERS



CF14



CR38



CFS38



CH38

Coupler Type	Model Number		
	Complete Set	Male Half	Female Half
High-Flow Coupler	CH38	CH38M	CH38F
Flush-Face Coupler	CFS38	CFS38M	CFS38F
Regular-Flow Coupler	CR38	CR38M	CR38F
Zinc Coupler	CRZ14	CRZ14M	CRZ14F
High Flow Coupler	CH14	CH14M	CH14F

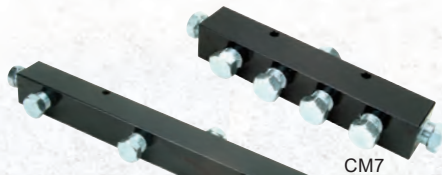
PUMP MOUNTED MANIFOLD BLOCK



CMR2 / CUMR2

- Valves for use with remote mounted valves
- Come with 4pcs. mounting screws

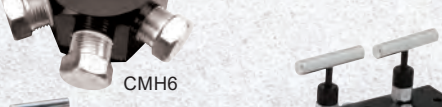
MANIFOLDS



CM7



CM14



CMH6



MFC2



MFC4

Manifold Type	Model Number	Number of Ports
6-Port Hexagon Manifold	CMH6	6
7" Long Manifold	CM7	7
14" Long Manifold	CM14	
Manifold with 2 needle valves	MFC2	3
Manifold with 5 needle valves	MFC4	5

HYDRAULIC HOSES



Model Number		Hose End Fittings	Hose Length (ft)
Rubber	Thermo Plastic		
Hose I.D. 1/4"			
CS1414	—	1/4"-18NPTF	6
CS3814	CT3814	3/8"-18NPTF	6
CS3814A	—		2
CS3814B	CT3814B		3
CS3814C	CT3814C		10
CS3814D	CT3814D		20
CS3814G	CT3814E		30
Hose I.D. 3/8"			
CS1438	—	1/4"-18NPTF	6
CS3838	CT3838	3/8"-18NPTF	6
CS3838C	CT3838C		10
CS3838D	CT3838D		20
CS3838E	CT3838E		30
CS3838F	-		50

HOSE SETS

- Hose and coupler set

Hose I.D. (in)	Hose Length (ft)	Hose Set Model Number
with CH38M		
1/4" Rubber	3	CS3814BM
	6	CS3814M
	10	CS3814CM
	20	CS3814DM
3/8" Rubber	6	CS3838M
	10	CS3838CM
	20	CS3838DM
	30	CS3838EM
	50	CS3838FM
1/4" Thermo Plastic	6	CT3814M
	10	CT3814CM
with CR38M		
1/4" Rubber	3	CS3814BRM
	6	-
	10	CS3814CRM
	20	CS3814DRM
with CRZ14M		
1/4" Rubber	6	CS3814QM

FLOW CONTROL VALVES



Valve Type	Model Number	Ports
Needle Valve	CVN1	1/4"-18NPTF
	CVN3	3/8"-18NPTF
Check Valve	CVC3	
Pressure Relief Valve	CVR3	

FITTINGS

Fitting Type	Model number
2 way 45° Connector, 3/8" to 7/8"-NPTF	FT045
2 way 90° Connector Street Elbow, 3/8" to 3/8"-NPTF	FT101
Coupling Reducing Connector, 3/8" to 1/4"-NPTF	FT102
Coupling Reducing Connector, 1/2" to 3/8" - NPTF	FT112
Coupling 3/8" to 3/8" - NPTF	FT103
Male Connector Hex Nipple, 1/4" to 1/4" - NPTF	FT104
Male Connector Hex Nipple, 3/8" to 3/8" - NPTF	FT114
4 Way Connector Cross, 3/8" to 3/8" - NPTF	FT105
3 Way Connector 3/8" to 3/8" - NPTF	FT106
2 way 90° Connector Elbow, 3/8" to 3/8" - NPTF	FT107
Adaptor 1/2"-14 Female 3/8"-18 Male - NPTF	FT108
Adaptor 1/2"-14 Female 1/4"-18 Male - NPTF	FT118
Male Connector Hex. Nipple 1/4" to 3/8" NPTF	FT124
Fitting Male 1/4"-18NPTF, Female 3/8"-18NPTF	CA3814
Bushing Male 3/8"-18NPTF, Female 1/4"-18NPTF	CB1438
Bushing Male 1/2"-18NPTF, Female 1/4"-18NPTF	CB1412
Bushing Male 1/2"-18NPTF, Female 3/8"-18NPTF	CB3812

LOCK NUT CYLINDERS



- Single acting cylinder with mechanical safety lock nut
- Designed to support load for extended periods without hydraulic pressure
- Overflow port prevents cylinders from over travel
- Load return
- Ideal for lifting and holding loads
- Maximum working pressure: 10,000 psi / 700 bar

Cylinder Capacity (tons)	Stroke (in)	Model Number	Collapsed Height (in)
150	1.97	HLN15002	8.23
	5.91	HLN15006	12.17
	7.87	HLN15008	14.13
	9.84	HLN15010	16.10
200	11.81	HLN15012	18.07
	1.97	HLN20002	9.57
	5.91	HLN20006	13.50
	7.78	HLN20008	15.50

LOW PROFILE LOCK NUT CYLINDERS



- Single acting cylinder with mechanical safety lock nut
- Designed to support load for an extended period of time
- Low profile for confined spaces
- 5° tilting saddle is standard

Cylinder Capacity (tons)	Stroke (in)	Model Number	Collapsed Height (in)
60	1.97	HLNF6002	4.92
100		HLNF10002	5.39
160	1.77	HLNF16002	5.83
200		HLNF20002	6.10

3 PHASE ELECTRIC MOTOR PUMPS



- Quiet operation meets OSHA regulations (80dBA)
- 2 speed operation allows for faster cylinder advance
- Full load starting capacities
- Internal filter keeps contamination from damaging pump
- Rugged durable design meets the demands of industrial applications
- Precision components to minimize wear and improve overall dependability
- Motor can accept 50 Hz or 60 Hz electricity

Motor Size (hp)	Usable Oil Capacity (gal)	Model Number	Pressure Rating	
			1st Stage (psi)	2nd Stage (psi)
3	6	PE60S4L06J	700	10,000
		PE60S4L06G		

2 SPEED FOOT PUMP



- Internal pressure relief valve for overload protection.
- Rugged durable design, provides the demands of industrial application.
- Good for use with cylinders and hydraulic tools or OEM applications.
- Two-Speed pumps reduce user fatigue and increase productivity.
- Combination kit SP5-3814 available.

Usable Oil (in ³)	Model Number	Pressure Rating		Piston Stroke
		1st Stage (psi)	2nd Stage (psi)	
30.50	P570FP	200	10,000	0.82

TWO SPEED ALUMINUM ALL DIRECTION HAND PUMP

- Lightweight aluminum alloy for easy handling
- Pump will operate in all positions for ease of use
- Can be securely mounted on equipment
- Solid metal valve release knob



Usable Oil Capacity (in ³)	Model Number	Oil Displacement per Stroke	
		1st Stage (in ³)	2nd Stage (in ³)
53-62	P1000AD	0.81	0.14

55 TON SHOP PRESSES WITH MOVABLE WORK HEAD



- Heavy steel welded construction
- Cylinder moves from side to side and locks into position
- Multi-position bed for work height adjustment
- Pump, cylinder, hose and fittings are included

Capacity (tons)	Model Number	Pump Type	Cylinder Stroke (In)
Single Acting 55 Ton Capacity			
55	IMPR5506	Manual	6
	IAPR5506	Air	
	IEPR5506	Electric	
	IAPR5513	Air	13
	IEPR5513	Electric	
	IEPRS5513	Electric /Solenoid	
Double Acting 55 Ton Capacity			
55	IAPDR5506	Air	6
	IEPDR5513	Electric	13
	IEPDRS5513	Electric /Solenoid	

USA, Canada, Mexico, Central & South America

10939 N. Pomona Ave.
Kansas City, MO 64153
Tel. 888-332-6419, 816-891-6390
Fax. 816-448-2142
Email: sales@bvahydraulics.com



BVA
HYDRAULICS

BVA Distributor:

MEUNIER
INDUSTRIAL TOOLING

4860, boulevard Industriel
Sherbrooke QC J1R 0P4

info@outillagemeunier.com
outillagemeunier.com
T 819 820-0487
Toll free: 1 888 820-0487