

# FALL & WINTER



PRICES IN EFFECT UNTIL DECEMBER 31ST, 2025

## WET-DRY VACUUM

Double filtration system

8530LPN

- Power cord wrap for 12 ft. power cord
- Comes complete with 6 ft. x 1-1/4" hose, 2 pc. extension wand, 30L dust bag, cartridge filter, foam filter, reusable filter, 10" floor sweep and crevice tool



4 PEAK HP 8 30 LITERS GALLON US \$89.99

## VARIABLE SPEED RECIPROCATING SAW KIT

8354N

- Variable speed 0-2900 SPM
- Tool-less blade clamp system
- Accepts standard 1/2" shank blades
- Comes with a wood cutting blade and metal cutting blade

Powerful 7.5 Amp. motor \$69.99



## 135 PC VARIABLE SPEED ROTARY TOOL KIT

8353N

- 8,000 - 30,000 RPM
- Comes with 40" Flex Shaft, 135 PC. assorted accessories & adjustable stand

\$45.99



## 7 1/4" 12 AMP. CIRCULAR SAW

8307N

- Durable steel shoe with depth adjustment and adjustable bevel stops at 0° and 45°
- Comes with 24 tooth carbide tipped blade, arbor hex, key and adjustable edge guide

\$55.



## 10" SLIDING COMPOUND MITER SAW WITH TWIN LASER

8380NS

- Powerful 15 Amp. 5,000 RPM motor
- Rotating table has 9 positive stops at 0°, 15°, 22.5°, 30° and 45° right and left
- Comes complete with a 2 position vertical hold down vise, retractable extension wings, dust bag, blade socket wrench and 40 tooth carbide-tipped blade

\$229.99

Includes 10" carbide blade



# Think KING when RENOVATING

Proudly Canadian

# MEUNIER

## TOOLS

4860, boul. Industriel  
Sherbrooke, QC  
J1R 0P4

819 820-0487

## FORCED AIR CONSTRUCTION PROPANE HEATERS

- Forced air heater is ideal for spaces up to 1,500 sq. feet (KPH-60) and 3,125 sq. feet (KPH-125), spaces such as construction sites, garages, workshops, warehouses and barns
- Variable heat settings for efficient use
- Continuous electronic ignition

KPH-60

40,000 - 60,000 BTU/H

WOW \$159.99



KPH-125

95,000 - 125,000 BTU/H

WOW \$229.99

## 8" DRILL PRESS

KC-108N

- 2.5 Amp. motor
- 5 speeds (620-3100 R.P.M.)
- 8" swing
- 2" stroke
- 1/2" chuck

\$119.99



29 PC. TITANIUM DRILL BIT SET KDB-29T 1/16" - 1/2" x 1/64"

\$39.99



## 10" TABLE SAW WITH RIPPING KNIFE

KC-5006R

- Powerful 15 Amp., 4,800 RPM ball bearing motor
- Comes with 10" carbide tipped ripping blade, rip fence, aluminum guide, miter gauge, push stick, blade wrenches and adjustment keys

\$199.99

Stand Included



## 4000W DUAL FUEL GASOLINE/PROPANE DIGITAL INVERTER GENERATOR

KCG-4000i-DF

- Sine wave digital inverter generator provides stable current to power voltage-sensitive electronics
- Powerful 5 HP. 4 stroke air cooled OHV engine DC output for charging smartphones, tablets or any USB powered equipment
- Carbon monoxide (CO DETECTOR™) safety system is designed to detect harmful levels



\$879.99

Comes with propane tank connection cable, Nema L5-30P/Nema TT30R RV adaptor

## 3 GALLON ULTRA-QUIET OIL-FREE AIR COMPRESSOR

KC-1030A

- 3.5 CFM @ 40 PSI
- 2.8 CFM @ 90 PSI
- 135 PSI maximum tank pressure
- 1.1 HP (PEAK) (64 Decibels)

\$199.99



## 30 PC VARIABLE SPEED OSCILLATING MULTI-TOOL KIT & ACCESSORIES

- Each kit includes a sanding back-up pad with hook and loop backing, 24 sanding papers (60, 80 and 120 grit) with hook and loop backing, 35mm Tru-cut narrow offset saw blade, 52mm rigid offset scraper blade, hex. key, and sturdy carrying case

\$69.99



## BENCH GRINDER 6"

KC-690LN

- 3450 RPM

\$79.99

Built-in LED lights

Enhanced Laser Effect





# MILLING DRILLING MACHINES & ACCESSORIES

## Drill Presses with Digital Readout

### 12" BENCH VARIABLE SPEED DRILL PRESS

#### KC-12HS-VS

- Powerful 1/2 HP, 5 Amp motor.
- Variable speeds (580 - 3200 RPM)
- Comes with 5/8" drill chuck, chuck key, onboard chuck key storage and adjustment hex. keys

Mechanical variable speed system

Mechanical variable speed system

### 15" FLOOR VARIABLE SPEED DRILL PRESS

#### KC-15HS-VS

- Powerful 3/4 HP, 8.6 Amp. motor
- 4" stroke capacity allows drilling workpieces up to 4" thick
- Variable speeds 2 (280 - 1100 / 900-3300) RPM
- Comes with 5/8" drill chuck, chuck key, onboard chuck key storage and adjustment hex. keys

\$499.99

\$699.99

## 17" DRILL PRESS

DRILL PRESS CHUCK SAFETY GUARD  
KM-118  
Fits KC-118FC

\$29.99

## 17" DRILL PRESS with SAFETY GUARD & LIMIT SWITCH

#### KC-118FC

- 12.5 Amp. motor
- 16 speeds (240-3400 RPM)
- 17" swing
- 3 1/4" stroke
- 5/8" chuck

\$799.

#### KC-118FC-LS

- 12.5 Amp. motor
- 16 speeds (240-3400 RPM)
- 17" swing
- 3 1/4" stroke
- 5/8" chuck

\$899.

## 17" LONG STROKE DRILL PRESS with SAFETY GUARD

LONG 6" STROKE

#### KC-119FC-LS

- 12.5 Amp. motor
- 12 speeds (255-2750 RPM)
- Spindle taper MT #3
- 16 15/16" swing
- 6" stroke
- 3/4" chuck

\$1099.

## 22" DRILL PRESS with SAFETY GUARD & LIMIT SWITCH

DRILL PRESS CHUCK SAFETY GUARD  
KM-122  
Fits KC-122FC

\$29.99

#### KC-122FC

- 12.5 Amp. motor
- 1 1/4" capacity
- Spindle taper MT #4
- 12 speeds (180-4200 RPM)
- 4 3/4" stroke
- 3/4" chuck

\$1299.

#### KC-122FC-LS

- 12.5 Amp. motor
- 1 1/4" capacity
- Spindle taper MT #4
- 12 speeds (180-4200 RPM)
- 4 3/4" stroke
- 3/4" chuck

\$1399.

## 15" VARIABLE SPEED INDUSTRIAL DRILL PRESS

Variable speed handwheel with digital readout

Safety guard with limit switch protection

LONG 6" STROKE

#### KC-30HS-VS

- Powerful 1 HP motor
- E-stop 2 step activation safety switch with line voltage interruption
- Variable speeds: 400-5,000 RPM
- 5/8" drill chuck and key

\$2999.

HEAD TILTS 90° TO THE LEFT AND 30° TO THE RIGHT

## 21" GEARHEAD DRILLING MACHINE WITH SAFETY GUARD & LIMIT SWITCH

#### KC-40HS (220V)

#### KC-40HS-6 (600V)

- 1.5 HP Motor
- Forward & Reversing Switch
- 1 1/4" Drilling Capacity
- 20 7/16" Swing
- Spindle Taper MT#3
- 6 Speeds (60-1500 RPM)
- Face Mill Capacity 4"
- End Mill capacity 3/4"

\$4999.

HEAD TILTS 90° TO THE LEFT AND 30° TO THE RIGHT

## 21" GEARHEAD DRILLING/MILLING MACHINE WITH SAFETY GUARD & LIMIT SWITCH

#### KC-40HC (220V)

#### KC-40HC-6 (600V)

- 1.5 HP Motor
- Forward & Reversing Switch
- 1 1/4" Drilling Capacity
- 20 7/16" Swing
- Spindle Taper R-8
- 6 Speeds (60-1500 RPM)
- Face Mill Capacity 4"
- End Mill capacity 3/4"
- Working surface of table 23"x 7 1/2"

\$5999.

POWER DOWNFEED & TAPPING

RECIRCULATING COOLANT SYSTEM

## 28" GEARHEAD DRILLING MACHINE WITH SAFETY GUARD & LIMIT SWITCH

#### KC-50

- 2 HP motor
- 27 1/2" swing
- 7" stroke
- Speeds (60-870 / 120-1740)
- 1 1/2" capacity
- Spindle taper MT#4
- 5/8" Chuck & key included

\$6999.

## 29 PC. TITANIUM DRILL BIT SET

#### KDB-29T

\$39.99

29 (1/16"-1/2" x 1/16" 4")

## CROSS SLIDE VISES

#### 4"- KCV-4N

\$79.99

#### 5"- KCV-5N

\$99.99

#### 6"- KCV-6N

\$129.99

## DRILL PRESS VISES

#### 3"-KPV-3

\$19.99

#### 4"-KPV-4

\$29.99

#### 5"-KPV-5

\$44.99

#### 6"-KPV-6

\$59.99

## KEYLESS DRILL CHUCKS

#### KDC-12X 1/2"JT#33

\$79.99

#### KDC-58X 5/8"JT#3

\$99.99

#### KDC-34X 3/4"JT#4

\$129.99

## COMPOUND SLIDE TABLE

#### KCT-618

\$249.99

6" X 18 1/2" - 1/2" T- slots

## 52 PC. CLAMPING KITS

#### KCL-5212

\$89.99

Fits 1/2" table slots

#### KCL-52

\$89.99

Fits 5/8" table slots

## 20 PC. TITANIUM COATED END MILL SET

#### KM-120

\$199.99

2 & 4 Flute (10 pcs. each)

Imperial, Single End

## 18 PC. COLLET SETS

Includes straight shank, 15 collets, wrench and plastic case.

### KCS-4015

- Straight shank taper ISO 40
- Draw Bar 5/8" WII

**\$399.99 ea.**



### KCS-R8-15

- Straight shank taper R8
- Draw Bar 7/16" NF 20

## DIVIDING PLATES FOR ROTARY TABLE

### KC-DPRT-6

Size 6"

**\$159.99**

### KC-DPRT-8

Size 8"

**\$159.99**



## K-TYPE SWIVEL BASE MILLING VISES

3" KMV-3M

**\$129.**

6"

KMV-6M **\$279.**

4" KMV-4M

**\$199.**

8"

KMV-8M **\$379.**



## HORIZONTAL & VERTICAL ROTARY TABLES

### KC-HVRT-6

Size 6"

**\$499.**



### KC-HVRT-8

Size 8"

**\$599.**

## MINI MILLING DRILLING MACHINE

### KC-15VS

- Variable speed gear drive
- Spindle depth fine feed control with micro downfeed dial
- Adjustable depth stop
- Chuck guard
- Emergency stop button
- Comes with 1/2" chuck, chuck key, R8 chuck arbor, safety guard, 2 T-bolts, oil bottle, adjustment wrenches and

**POWERFUL 3/4 HP MOTOR**



Column tilts 45° to the right or left

**\$1099.**

## 12" SLOW SPEED COLD CUT SAW

### KC-315CS

- 4.5 HP motor
- Low 52 RPM blade speed is ideal for cutting ferrous metals
- Mitering head pivots to the right or left with positive stops at 45° and 90°

Blade not included



## OPTIONAL

### 12" COLD CUT SAW BLADE

KM-1200 (Made in Italy)

**\$399.**



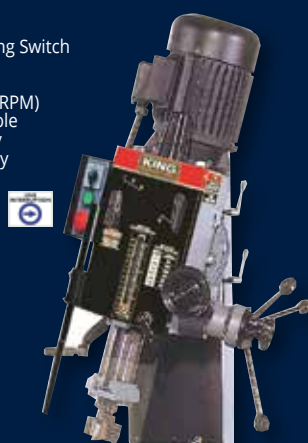
**\$2999.**

## GEARHEAD MILLING DRILLING MACHINE WITH SAFETY GUARD & LIMIT SWITCH

### KC-45

- 1.5 HP Motor
- Forward & Reversing Switch
- 20 7/16" Swing
- 5" Stroke
- 6 speeds (60-1500 RPM)
- 9 1/2" X 32 1/4" Table
- 1 1/4" Drill capacity
- 4" Face mill capacity
- Spindle taper R8

**\$5999.**



## OPTIONAL

### TABLE POWERFEED ATTACHMENT

#### PFM-32

For # KC-45

**\$679.**

## OPTIONAL

### MILLING DRILLING MACHINE STAND

#### SS-45

**\$399.99**



## RADIAL DRILLING MACHINE WITH SAFETY GUARD

### KC-35/SS-35

- 1.5 HP Motor
- 21 1/4" Max. distance spindle nose to table
- Speeds 5(340-3000 R.P.M.)
- 5 1/4" Spindle stroke
- MT #3 Spindle taper
- 38 1/2" swing
- 4 1/2" Column diameter
- 21 5/8" x 19 5/8" Table dimensions
- 14" Head travel
- 5/8" Size of T-Slot on table
- Forward reverse switch
- 1/2" chuck with key, safety guard and stand



**HEAD SWIVELS 180°**

**\$4999.**

## MILLING DRILLING MACHINE WITH DIGITAL READOUT, SAFETY GUARD & LIMIT SWITCH

### KC-20VS-2

- 1 HP Motor
- 13" Max. distance spindle nose to table
- 13" swing
- R8 Spindle taper
- 2" Spindle stroke
- Speeds 2(50-1125 / 100-2250 RPM)
- 7 1/16" x 27 1/2" Table dimensions
- 1/2" Size of T-Slot on table
- Comes with 1/2" chuck, chuck key, R8 chuck arbor, safety guard, 2 T-bolts, oil bottle, adjustment wrenches, hex. keys and tool box

**\$2299.**



**HEADS TILTS 90° TO THE LEFT AND RIGHT**

## OPTIONAL

### MILLING DRILLING MACHINE STAND

#### SS-20VS

**\$349.**



# METAL CUTTING BANDSAWS

## PORTABLE VARIABLE SPEED METAL CUTTING BANDSAW

### KC-8377

- Variable speed 0-420 SFPM
- Cutting capacity of 5" x 5"
- Blade tension lever
- Comes with standard 44-7/8" x 1/2" blade

**\$199.99**

### OPTIONAL

Miter Stand turns this Bandsaw into a Cut-off Saw

### SS-8377

**\$99.99**

BI-METAL BLADES					
Model	Length	Width	TPI	Thickness	Price
KBB-8376-BM-1014	44 7/8"	1 1/2"	10-14	.020"	\$24.99
KBB-8376-BM-1418	44 7/8"	1 1/2"	14-18	.020"	\$24.99

## 5" x 6" METAL CUTTING BANDSAW

### KC-129C

- 3 speeds (80-120-200 FPM)
- Comes with wheels for portability

**8 Amp.  
(110V)**

**\$699.**

H.S.S. & BI-METAL BLADES					
Model	Length	Width	Blade Material	TPI	Thickness Price
KBB-115-10	64 1/2"	1 1/2"	H.S.S.	10	.025" \$19.99
KBB-115-14	64 1/2"	1 1/2"	H.S.S.	14	.025" \$19.99
KBB-115-18	64 1/2"	1 1/2"	H.S.S.	18	.025" \$19.99
KBB-115-24	64 1/2"	1 1/2"	H.S.S.	24	.025" \$19.99
KBB-115-BM-10	64 1/2"	1 1/2"	Bi-Metal	10	.025" \$39.99
KBB-115-BM-14	64 1/2"	1 1/2"	Bi-Metal	14	.025" \$39.99
KBB-115-BM-18	64 1/2"	1 1/2"	Bi-Metal	18	.025" \$39.99

PRECISION  
PRESSURE  
GAUGE  
INDICATES  
THE BLADE  
TENSION



## 10" x 18" METAL CUTTING BANDSAW

### KC-227-2 (220V)

### KC-227-6 (600V)

- 4 speeds (114, 196, 288, 377 FPM)
- Carbide ball bearing blade guide
- Control panel with automatic shut-off
- Adjustable hydraulic downfeed control
- Both adjustable control arms can be positioned as close to the cut as possible
- Coolant system with regulator valves

H.S.S. BLADES					
Model	Length	Width	TPI	Thickness	Price
KBB-225-10	122"	1"	10	.032"	\$39.99
KBB-225-14	122"	1"	14	.032"	\$39.99

**11.5 Amp. @ 220V  
2.6 Amp. @ 600V**

PATENTED  
TRU-LOCK™ quick  
locking vise system.

Exclusive  
24 Volt  
control  
panel

Exclusive  
24 Volt  
control  
panel

**\$5999.**

## 5" x 6" DUAL SWIVEL METAL CUTTING BANDSAW

### KC-129DS

- Head swivels 0° - 45° to the right and 0° - 60° to the left
- Adjustable hydraulic downfeed control
- Automatic shut-off switch



**8 Amp.  
(110V)**

**\$999.**

ADJUSTABLE  
HYDRAULIC  
CYLINDER



## 10" x 18" VARIABLE SPEED SWIVEL METAL CUTTING BANDSAW

### KC-228S-V-2 (220V)

### KC-228S-V-6 (600V)

**11.5 Amp. @ 220V  
2.6 Amp. @ 600V**

- Swivel base from 0° to 45°
- Position adjustable control panel and automatic shut-off
- Adjustable hydraulic down feed control
- Carbide ball bearing blade guides
- Coolant system with regulator valves

BI-METAL BLADES					
Model	Length	Width	TPI	Thickness	Price
KBB-225-BM-610	122"	1"	6-10	.032"	\$99.99
KBB-225-BM-812	122"	1"	8-12	.032"	\$99.99

PATENTED  
TRU-LOCK™ quick  
locking vise system.

**\$7999.**

# METAL CUTTING BANDSAWS

## 7" x 12" DUAL SWIVEL METAL CUTTING BANDSAW

KC-712DS

6 Amp.  
(220V)

- Returning coolant system
- 4 speeds (98-164-246-328 FPM)
- Automatic shut-off
- Adjustable ball bearing guides

PATENTED  
TRU-LOCK™ quick  
locking vise system.



**\$3599.**

**nova™**

## 7" x 12" NOVA DVR METAL CUTTING BANDSAW

59002C

- Smart metal bandsaw features state of the art technology
- Digital Variable Reluctance (DVR) Direct Drive 1 HP motor with Adaptive Control™ Software
- Constant torque under load and electronic braking emergency stop
- Includes a 240V conversion components kit

**DVR  
Smart**  
THE WORLD FIRST  
SMART BANDSAW  
WITH DIGITAL  
DISPLAY

**NEW**



**\$3499.**

## 9" x 18" METAL CUTTING SWIVEL BANDSAW

KC-918S-V (8 Amp. 220V)

KC-918S-V- 600V (2.5 Amp. 600V)

- Returning coolant system
- Variable speeds (80-250 FPM)
- Carbide ball bearing blade guides with rollers
- Centralized control panel and automatic shut-off
- Adjustable hydraulic downfeed control
- Precision blade tension adjustment
- Head swivels 0° to 45° in one direction
- Quick-positioning vise with fully adjustable jaws for 0° to 45° angles

**VARIABLE  
SPEED**



**\$8499.**

## 17" VARIABLE SPEED METAL/WOOD CUTTING BANDSAW

KC-1700WM-VS

- Variable speeds (wood): 540-3600 SFPM
- Variable speeds (metal): 100-650 SFPM
- Voltage (input power): 220V, 1 phase, 60 Hz
- Comes with a 1/2" x 6 TPI wood cutting blade, 1/2" x 10 TPI metal cutting blade, laser guide, work lamp, miter gauge and a precision "TRU-RIP" aluminum rip fence with resaw guide



**2HP  
(8'Amp. @ 220V)**

**\$4499.**

## 18" METAL CUTTING BANDSAW

KC-450

- Variable speed
- Handwheel controls speed
- Speed changes while the machine is in operation
- Comes complete with 4-way tilting table, and work light



**7.5 Amp.  
(220V)**

**\$5499.**

### H.S.S. & BI-METAL BLADES ("SKIP TOOTH")

Model	Length	Width	Blade Material	TPI	Thickness	Price
KBB-918-10	131 3/4"	1"	H.S.S.	10	.032"	\$39.99
KBB-918-14	131 3/4"	1"	H.S.S.	14	.032"	\$39.99
KBB-918-BM-610	131 3/4"	1"	Bi-Metal	6-10	.032"	\$99.99
KBB-918-BM-812	131 3/4"	1"	Bi-Metal	8-12	.032"	\$99.99



## BENCH GRINDER STAND

SS-150N

- Made of cast-iron & alloy steel
- Height of 31-1/2" from the floor
- Water reservoir for quenching workpieces



\$79.99

## BENCH GRINDERS

KC-690LN

• 3450 RPM

**Built-in LED lights**

\$79.99



KC-890

• 7 Amp. motor  
• 3450 RPM

\$145.



KC-1090N

• Powerful 1-1/2 HP, 13 Amp. 1,750 RPM low speed motor  
• Comes with medium 60 Grit and coarse 36 Grit 10" x 1" grinding wheels

\$349.99

**POWERFUL 13 AMP. MOTOR**



**8" LOW SPEED BENCH GRINDER WITH LIGHT**

KC-895LS  
Comes with coarse 60 grit and fine 120 Grit 8" x 1" white aluminum oxide grinding wheels

\$159.99



## 10" WET/DRY SHARPENER KIT

KC-4900S

- 1.6 Amp. motor quietly rotates at 115 RPM for maximum precision during sharpening
- Comes with angle guide honing compound and a square edge jig for sharpening a variety of blades and wood chisels



\$249.99

## OPTIONAL

4 pc. Accessory Kit

KM-130

(Short knife jig, long knife jig, scissors jig & axe jig)



\$69.99

## 8" LOW SPEED LONG SHAFT BUFFER

KC-899LSB

- Powerful 1/2 HP motor
- Arbor shaft diameter: 5/8"
- Motor no load speed: 1,750 RPM
- Comes with two 8" x 1/2" spiral sewn cloth buffing wheels



\$159.99

2PC. 8" X 1/2" BUFFING WHEEL KIT

KM-131

\$39.99

## 2" X 42" BELT & 8" DISC SANDER

KC-770FX

- Both a 1" and a 2" sanding belt can be installed
- Comes with 1" x 42" sanding belt, 2" x 42" sanding belt, 1" & 2" belt platens, 2 x 8" adhesive sanding discs, miter gauge and adjustment hex. keys



\$499.

**NEW & IMPROVED WITH SAFETY GUARDS**

2"x 42" PURE ZIRCONIA SANDING BELTS

Model	Belt Size	Grit	Unit	Price
SB-242-60Z	2"x42"	60	1	\$9.99
SB-242-80Z	2"x42"	80	1	\$9.99
SB-242-100Z	2"x42"	100	1	\$9.99
SB-242-120Z	2"x42"	120	1	\$9.99

PURE ZIRCONIA 8" SANDING DISCS

Model	Disc Size	Grit	Unit	Price
SD-8-60Z	8"	60	1	\$9.99
SD-8-80Z	8"	80	1	\$9.99
SD-8-100Z	8"	100	1	\$9.99
SD-8-120Z	8"	120	1	\$9.99

## 3" X 79" METAL BELT SANDER

Comes with Canadian made 80 Grit pure zirconia sanding belt



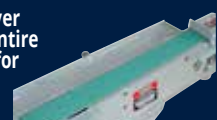
2 HP (220V)

\$1099.

KC-379MS

- Sanding belt rotates on 7-1/2" vented drive wheel and solid rubber rear wheel for maximum tracking and sanding control
- Head pivots up or down on base for easy and safe work heights
- Horizontal working height of 36"

Hinged top cover for access to entire length of belt for larger pieces



## 3"x 79" PURE ZIRCONIA SANDING BELTS

Model	Belt Size	Grit	Unit	Price
SB-379-60	3"x79"	60	1	\$19.99
SB-379-80	3"x79"	80	1	\$19.99
SB-379-120	3"x79"	120	1	\$19.99



## 2 HP METAL DUST COLLECTOR

KC-7300C

- Powerful 2 HP, 220V motor
- 2 Step activation safety switch with line voltage interruption
- Ideal for collection of metal chips and abrasive dust produced by metal sanders, grinders, cold cut saws, deburring and chamfering machines
- Large metal chips collection drawer
- 6" inlet with Y-inlet adaptor with two 3" dust inlets allowing up to connect up to two metalworking machines
- Comes with large paper filter and iron activated carbon filter

\$1699.

## DIGITAL FRACTIONAL CALIPER

KM-106

- Converts to inches (decimal and fractional) and metric readings
- Waterproof to IP54 standards
- Two 3V Lithium batteries included



\$35.

## FIREPROOF 3" METAL DUST COLLECTION HOSES KIT

KM-102

Kits Includes: 2 - 8ft. (2.5M) Fireproof hoses 4 - hose clamps (3")



\$89.99

RATED 130°C

1.5 HP (220V) Direct Drive Motor

\$1699.

12" HEAVY-DUTY BENCH GRINDER WITH FLOOR STAND

KC-1295

- Cast-iron wheel guards and dust vents with 2-1/2" T-fitting adaptor for dust collection
- Built-in cast-iron quench tray, 36 Grit and 60 Grit 12" x 2" grinding wheels



## MAGNETIC SWITCHES

Comes with twist lock emergency stop button

\$129.99 ea.



KMAG-110-811	110V (8-11 Amp.)
KMAG-110-1114	110V (11-14 Amp.)
KMAG-110-1417	110V (14-17 Amp.)
KMAG-220-811	220V (8-11 Amp.)
KMAG-220-1114	220V (11-14 Amp.)
KMAG-220-1417	220V (14-17 Amp.)
KMAG-220-1721	220V (17-21 Amp.)

# METAL FORMING MACHINES

# 3 IN 1

# METAL FORMING MACHINES



## 52" FOOT SHEAR

KC-F5216

- Cutting length 52"
- Capacity 16 Gauge
- Weight 1080 lbs

**\$2699.**



## SLIP ROLLS

KC-S5016

- Max. length 50"
- Capacity 16 Gauge
- Weight 540 lbs

**\$1699.**

KC-S3622

- Max. length 36"
- Capacity 22 Gauge
- Weight 176 lbs

**\$749.**

KC-S2422

- Max. length 24"
- Capacity 22 Gauge
- Weight 81 lbs

**\$649.**



## SHEAR, BRAKE AND ROLL

KC-1220

- Max. length 12"
- Maximum thickness 20 Gauge
- Weight 95 lbs

**\$699.**

KC-3020

- Max. length 30"
- Maximum thickness 20 Gauge
- Weight 300 lbs

**\$999.**

KC-4020

- Max. length 40"
- Maximum thickness 20 Gauge
- Weight 387 lbs

**\$1599.**

## 16 GAUGE BOX AND PAN BRAKE

KC-BP4816

- Bending length 48 1/2"
- Capacity 16 Gauge
- Weight 380 lbs

**\$1199. NEW HEAVIER DUTY MODEL**



## 12" HAND SHEAR

KC-HS12

- Level arm with compensating spring

**\$249.**

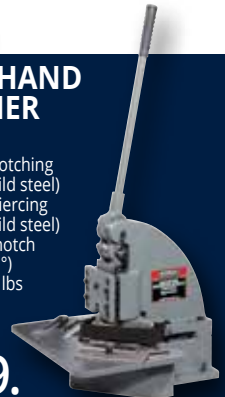


## 4 TON HAND NOTCHER

KC-N616

- 16 Gauge notching capacity (mild steel)
- 18 Gauge piercing capacity (mild steel)
- Maximum notch (6" X 6" x 90°)
- Weight 165 lbs

**\$749.**



## ARBOR PRESS

KAP-3

- Capacity: 3 Ton
- Diameter of work: 12 1/2"
- Capacity over table: 12"

**\$379.**

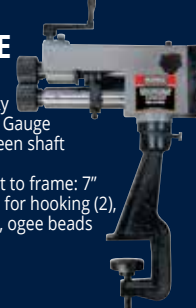


## COMBINATION ROTARY MACHINE

KC-RM22

- Cutting capacity (mild steel): 22 Gauge
- Distance between shaft centers: 2"
- Depth of throat to frame: 7"
- Includes 6 dies for hooking (2), burring, wiring, ogee beads and crimping

**\$749.**



## FLOOR MODEL BOX AND PAN BRAKE

KC-BP4812

- Bending length 48"
- Capacity 12 Gauge
- Weight 1140 lbs



**\$3999.**



## LED WORK LIGHTS



**KC-4002LED-ST**  
72W work light emits  
8000 lumens  
• Quick release latch  
• For indoor and outdoor  
use in dry locations

**\$199.99**

**\$149.99**

**KC-3002LED-ST**  
40W work light emits  
6000 lumens  
• Quick release latch  
• For indoor and outdoor  
use in dry locations

10W Work light  
emits 1500 lumens  
**KC-1502LED-C**  
**CORDLESS**



**\$49.99**

**KC-1501LED**  
15W Work  
light emits  
1500 lumens  
**\$35.99**

**KC-3001LED**  
20W work  
light emits  
3000 lumens  
**\$59.99**

**KC-4001LED**  
36W work  
light emits  
4000 lumens  
**\$99.99**



**2 TON  
FOLDING SHOP CRANE**  
**KFC-2TC**

- 8 ton hydraulic ram features top-of-stroke and safety overload bypass system for maximum pump protection
- Compact design with retractable boom and foldable legs
- Fold-up legs with safety pins extend to 65"

**\$379.**

**14" CUT-OFF SAW**

**8342LN**  
• Quick release vise for holding workpiece, allows cuts up to a 45° angle  
Powerful 15 Amp motor  
**\$179.99**



## RECIRCULATING PARTS WASHERS

**CLEANING BRUSH FOR PARTS WASHERS**

**KM-059**



**\$19.99**



**5 GALLON**  
**KPW-205**  
• Safety lever has fusible link  
• Durable pump included  
**\$89.99**

**20 GALLON**  
**KPW-220**  
• Safety lever has fusible link  
• Durable pump included  
**\$199.99**

**40 GALLON**  
**KPW-240**  
• Safety lever has fusible link  
• Durable pump included  
**\$299.99**

**VARIABLE SPEED HAND-HELD BLOWER/VACUUM**  
**8317**

- 116 CFM, max air speed 195 km/h (121 mph)
- Variable speed (6,000-14,000 RPM)
- Trigger lock-on button for continuous operation
- Comes complete with soft flexible rubber blower nozzle and a vacuum dust bag.



**Vacuum mode**

**ADHESIVE WINDOW PROTECTORS**  
**KM-097**  
Fits: KSB-110N-LED 5 PC. KIT

**\$29.99**

**KM-098**  
Fits: KSB-350-LED 5 PC. KIT

**\$29.99**

**REPLACEMENT CERAMIC NOZZLES**  
**KM-036**  
Fits: KSB-110N-LED & KSB-350-LED 4 PC. KIT

**\$29.99**

## PRESSURE ABRASIVE SANDBLASTERS

- Safety pressure relief valve
- Loading abrasive is made simple using the concave funnel top of the tank
- Safety pressure relief valve
- 1/2" (I.D.) x 8 ft abrasive feed hose
- Includes media gun, 4 interchangeable nozzles (2, 2.5, 3 & 3.5mm), water separator filter, protective blast hood and teflon tape

**KSB-10** 10 GALLON  
**KSB-20** 20 GALLON



Protective blast hood included

**\$249.99**

**\$299.99**

## HYDRAULIC SHOP PRESSES WITH GRID GUARD

- Great for straightening, pressing, bending or stamping
- Used to install or remove gears, bushings or bearings
- Adjustable bed height with support rods
- Comes with 2 pressure plates

**Optional**  
9 PC. PUNCH & DIE KIT  
**KM-045**  
**\$129.99**

**10 TON**



**KHP-10T-GGN**  
**\$349.99**

**KHP-20T-GGN**  
**\$559.99**

## SANDBLAST CABINETS WITH LED LIGHT

LED light for improved visibility

- 4 different sized ceramic nozzles
- 2 rubber gauntlet gloves
- Dual large access doors allow user to sandblast longer pieces of metal (KSB-350-LED only)
- Comes with 5 replacement adhesive window protectors



**KSB-110N-LED**  
**\$199.99**

**KSB-350-LED**  
**\$699.**



## 5.5 PEAK HP 20 GALLON AIR COMPRESSOR

- KC-2051H2  
 • 150 PSI max pressure  
 • 7.6 CFM @ 40 PSI  
 • 6.0 CFM @ 90 PSI

2 cylinder cast iron  
single stage oil  
lubricated pump



**\$775.**

COMPRESSOR  
OIL BOTTLE  
KW-077  
(850ml)



**\$9.99**

TIRE  
INFLATION  
GUN WITH  
PRESSURE  
GAUGE  
K-1630



**\$23.99**

## HIGH OUTPUT 6.5 PEAK HP 60 GALLON AIR COMPRESSOR

- KC-5160V2  
 • 150 PSI max pressure  
 • 22.6 CFM @ 40 PSI  
 • 18.5 CFM @ 100 PSI

3 cylinder cast iron  
single stage oil  
lubricated pump



**\$1599.**

## 5.5 PEAK HP 24 GALLON AIR COMPRESSOR

- KC-3124V2  
 • 150 PSI max pressure  
 • 7.6 CFM @ 40 PSI  
 • 6.0 CFM @ 90 PSI

2 cylinder cast iron  
single stage oil  
lubricated pump



**\$875.**

ASME  
safety  
valve

ASME  
safety  
valve

# AIR COMPRESSORS & ACCESSORIES

**KING  
INDUSTRIAL**

## SPRAY GUN KITS

8180



**\$39.99**

8182



**\$49.99**

8185



**\$69.99**

8190 HVLP



**\$79.99**

8195



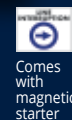
**\$99.99**

## INDUSTRIAL 2-STAGE AIR COMPRESSORS

### 2-STAGE 5 RUNNING HP 80 GALLON AIR COMPRESSOR

- KC-5280V3-MS  
 • 200 PSI max pressure  
 • 19 CFM @ 175 PSI

2 cylinder cast iron  
2-stage oil  
lubricated pump



Comes  
with  
magnetic  
starter

ASME  
safety  
valve

**\$3499.**

### 2-STAGE 7.5 RUNNING HP 80 GALLON AIR COMPRESSOR

- KC-7280V3-MS  
 • 200 PSI max pressure  
 • 24 CFM @ 175 PSI

2 cylinder cast iron  
2-stage oil  
lubricated pump



Comes  
with  
magnetic  
starter

ASME  
safety  
valve

**\$3999.**

## PREMIUM HYBRID POLYMER

### GARDEN HOSES

Extreme All-Weather Flexibility  
Kink resistant

- K-5058GH 5/8" x 50 ft. K-10058GH 5/8" x 100 ft.

**\$45.** **\$77.** 150 PSI (Working) / 450 PSI (Burst)



300 PSI MAXIMUM PRESSURE

## HYBRID POLYMER INDUSTRIAL AIR HOSES

K-2514H	25x1/4"	\$21.99
K-2538H	25x3/8"	\$29.99
K-5014H	50x1/4"	\$33.99
K-5038H	50x3/8"	\$44.99
K-10014H	100x1/4"	\$54.99
K-10038H	100x3/8"	\$65.99

## RETRACTABLE AIR HOSE REEL WITH HYBRID POLYMER AIR HOSE

- K-5038FRL  
 • All-Weather Flexibility (-40°C to 65°C)  
 • Comes with wall mounting hardware



**\$109.99**

## MANUAL AIR HOSE REEL WITH HYBRID POLYMER AIR HOSE

- K-10014FRL  
 • 360° swivel base  
 • All-Weather Flexibility (-40°C to 65°C)



**\$109.99**

## HEPA CARTRIDGE FILTERS

HEPA (high-efficiency particulate air) filters are designed to capture all particles that are 0.3 microns or smaller

- KVAC-1145  
 Fits: 8520LP, 8530LPN, 8531LP-B, 8540LSTN

- KVAC-1150  
 Fits: 8560LST



**\$39. EA.**

### 8520LP

- Powerful 3.5 Peak HP motor
- 5 US Gallon (20L)
- Comes complete with 6 ft. x 1-1/4" thread-on hose, 3 pc. plastic extension wand, 20L dust bag, foam filter, reusable filter, 10" floor sweep and crevice tool

**\$69.99**

Tank  
water  
drain

- 8530LPN  
 • Powerful 4 Peak HP motor  
 • 8 US Gallon (30L)  
 • Comes complete with 6 ft. x 1-1/4" hose, 2 pc. plastic extension wand, 30L dust bag, cartridge filter, foam filter, reusable filter, 10" floor sweep and crevice tool

**\$89.99**

### 8540LSTN

- Powerful 4 Peak HP motor
- 10 US Gallon (40L)
- Comes complete with 6 ft. x 1-1/4" hose, 2 pc. extension wand, 40L dust bag, cartridge filter, foam filter, reusable filter, 10" floor sweep and crevice tool

**\$179.99**

## Double filtration system

### 8560LST

- Powerful 6.5 Peak HP motor
- 16 US Gallon (60L)
- Convenient 18 ft. power cord
- Comes complete with 8 ft. x 2-1/2" flex hose, 2 pc. 2-1/2" extension wand, handle with air control, cartridge filter, foam filter, 14" floor sweep with squeegee insert, gulper tool, crevice tool and hanging accessory storage bag

Tank  
water  
drain

**\$299.99**



## 2500W GASOLINE DIGITAL INVERTER GENERATOR

KCG-2500i

- Sine wave digital inverter generator provides stable current to power voltage-sensitive electronics
- Powerful 3 HP**, 4 stroke air cooled OHV engine DC output for charging smartphones, tablets or any USB powered equipment
- Carbon monoxide (**CO DETECTOR™**) safety system is designed to detect harmful levels of CO



**WOW**  
**\$599.99**



**Optional**  
**K-X2P**  
Parallel Cable Kit for connectivity between two inverters 2500W inverters

**\$99.99**

## 4000W DUAL FUEL GASOLINE/PROPANE DIGITAL INVERTER GENERATOR

KCG-4000i-DF

- Sine wave digital inverter generator provides stable current to power voltage-sensitive electronics
- Powerful 5 HP**, 4 stroke air cooled OHV engine DC output for charging smartphones, tablets or any USB powered equipment
- Carbon monoxide (**CO DETECTOR™**) safety system is designed to detect harmful levels



**NEW**



**\$879.99**

Comes with propane tank connection cable, Nema L5-30P/Nema TT30R RV adaptor

## 5000W DUAL FUEL GASOLINE/PROPANE DIGITAL INVERTER GENERATOR

KCG-5000i-DF

- Powerful 8 HP**, 4 stroke air cooled motor
- Sine wave digital inverter generator provides stable current to power voltage-sensitive electronics
- DC USB port: 5V/2.1 Amp.
- DC cigarette lighter socket: 12V/8 Amp. DC output
- AC duplex outlet: 120V/20 Amp. AC output
- AC twist lock outlet: 120V/30 Amp. AC output



Remote control start



**\$1199.99**

Comes with propane tank connection cable, Nema L5-30P/Nema TT30R RV adaptor

## PALLET TRUCKS

Min. height of forks 2.95"  
Max. raised height of forks 7 1/2"

5,500 lbs capacity

KC-2145N-NYL  
(21" X 45")  
Nylon wheels

**429.99**

KC-2748N-NYL  
(27" X 48")  
Nylon wheels

**429.99**

KC-2748NP  
(27" X 48")  
Poly wheels

**429.99**



QUICK RELEASE FOOT PEDAL

QUICK RELEASE FOOT PEDAL

## GASOLINE WATER PUMPS

- 105" (KCG-2WPG) or 92" (KCG-3WPG) total head lift (total height at sea level, to which water can be raised above original water level)

- Oil sensor shuts off engine when oil level is low
- Comes with 3 wire clamps, 2 hose adapters, 2 rubber gaskets, strainer basket and strainer basket adapter



Standard accessories

KCG-2WPG

**\$339.99**



Standard accessories

KCG-3WPG

**\$399.99**

## 11000W TRI-FUEL DIGITAL INVERTER GENERATOR

KCG-11000i-TF

- Powerful 18 HP**, 4 stroke air cooled motor
- DC dual USB ports: 5V/3.1 Amp. DC output for charging smartphones, tablets or any USB powered equipment



Remote control start



**\$2199.99**



Comes with propane tank and natural gas connection cables.



## 15000W V-TWIN GASOLINE GENERATOR WITH ELECTRIC START

KCG-15000GE

- Powerful 20 HP**, V-Twin horizontal shaft 4 stroke air cooled motor
- AVR system and electronic ignition
- Two duplex outlets: 120V/20 Amp. AC
- Twist lock outlet: 120V/30 Amp. AC
- Outlet: 120V/240V/50 Amp. AC
- AC double throw circuit breaker and resets
- Terminals: 12V/8.3 Amp. DC with DC reset

AUTO-IDLE DOWN FUNCTION extends running time by automatically adjusting engine speed to idle when not under load



**\$2499.99**



## GASOLINE ENGINES

- Ideal for compressors, generators, pressure washers, go-karts and log splitters
- Counterclockwise drive shaft direction



KCG-65

Powerful 6.5 HP, 4 stroke air cooled OHV engine

**\$229.**



KCG-130

Powerful 13 HP, 4 stroke air cooled OHV engine

**\$449.**

## WATER PUMP HOSE KITS

Each hose kit comes with a type A threaded camlock adaptor  
CLEAR PVC REINFORCED SUCTION HOSES

**\$119.99**

KW-252  
2" X 25 ft

**\$199.99**

KW-253  
3" X 25 ft

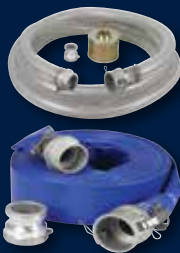
FLAT PVC DISCHARGE HOSES

**\$99.99**

KW-502  
2" X 50 ft

**\$119.99**

KW-503  
3" X 50 ft





# GASOLINE/PROPANE GENERATORS

## 5100W GASOLINE GENERATOR WITH WHEEL KIT

KCG-5100G

- **Powerful 8 HP**, 4 stroke air cooled OHV engine
- AVR system and electronic ignition
- Low oil shut-off with indicator light
- Two duplex outlets: 120V/20 Amp AC
- Twist lock outlet: 120V/240V/30 Amp AC

**\$449.99**



## 10000W TRI-FUEL GENERATOR WITH ELECTRIC START

KCG-10002GE-TF

- **Powerful 15 HP**, 4 stroke air cooled OHV engine
- AVR system and electronic ignition
- Low oil shut-off with indicator light protects the engine
- Two duplex outlets: 120V/20 Amp. AC
- Two twist lock outlets: 120V/30 Amp. and 1 20V/240V/30 Amp. AC



**\$1099.99**

Comes with propane tank and natural gas connection cables.

## 5100W DUAL/FUEL

GASOLINE/PROPANE GENERATOR WITH ELECTRIC START  
KCG-5101GE-DF

- **Powerful 8 HP**, 4 stroke air cooled OHV engine
- AVR system and electronic ignition
- Low oil shut-off with indicator light
- Two duplex outlets: 120V/20 Amp. AC
- Twist lock outlet: 120V/240V/30 Amp. AC
- Keyed electric start and easy start recoil starter
- AC double throw circuit breaker and resets for safe operation

**\$599.99**



Comes with propane tank connection cable

## 12600W GASOLINE GENERATOR WITH ELECTRIC START

KCG-12600GE

- **Powerful 18 HP**, 4 stroke air cooled motor
- AVR system and electronic ignition
- Two duplex outlets: 120V/20 Amp. AC
- Twist lock outlet: 120V/240V/30 Amp. AC
- Outlet: 120V/240V/50 Amp. AC
- AC double throw circuit breaker and resets

**\$1099.99**



## 6500W GASOLINE GENERATOR WITH ELECTRIC START & WHEEL KIT

KCG-6502GE

- **Powerful 10 HP**, 4 stroke air cooled OHV engine
- AVR system and electronic ignition
- Low oil shut-off with indicator light
- Two duplex outlets: 120V/20 Amp. AC
- Twist lock outlet: 120V/240V/30 Amp. AC

**\$649.99**



## 10000W GASOLINE GENERATOR WITH ELECTRIC START

KCG-10001GE

- **Powerful 15 HP**, 4 stroke air cooled OHV engine
- AVR system and electronic ignition
- Low oil shut-off with indicator light protects the engine
- Two duplex outlets: 120V/20 Amp. AC
- Two twist lock outlets: 120V/30 Amp.

**\$899.99**



## 12000W DUAL/FUEL

GASOLINE/PROPANE GENERATOR WITH ELECTRIC START  
KCG-12001GE-DF

- **Powerful 18 HP**, 4 stroke air cooled OHV engine
- AVR system and electronic ignition
- Low oil shut-off with indicator light
- Duplex outlet: 120V/20 Amp. AC
- Twist lock outlet: 120V/240V/30 Amp. AC
- Outlet: 120V/240V/50 Amp. AC
- Keyed electric start and easy start recoil starter
- AC double throw circuit breaker and resets
- Terminals: 12V/8.3 Amp. DC and

**\$1199.99**



Comes with propane tank connection cable

## GENERATOR HOME CONNECTION KIT

K-X7500

Outdoor to indoor receptacle kit  
Comes with 6 outlet power panel, generator power inlet box, 1/2" rigid PVC conduit, 1-1/4" spade bit, 1/2" PVC sleeve connector, 2 insulating gaskets and mounting hardware

**\$109.99**



## GENERATOR EXTENSION CORDS

Converts a Nema L14-30P 240V 30 Amp Twist Lock plug into Nema 5-15/20R 120V 20A receptacles

K-L1430-10

Extension cord length: 10 feet  
Gauge (AWG)/Cord: 12 (SJTW 4/C)



**\$39.99**

K-L1430R-25

Extension cord length: 25 feet  
Gauge (AWG)/Cord: 10 (SJTW 4/C)



**\$99.99**

K-L1430-25-4T

Extension cord length: 25 feet  
Gauge (AWG)/Cord: 10 (STW 4/C)



**\$99.99**

K-L1430-25EXT

Extension cord length: 25 feet  
Gauge (AWG)/Cord: 10 (SJTW 4/C)



**\$99.99**

## DESIGNED FOR OUR INVERTER GENERATORS

K-L530-25-3T

Extension cord length: 25 feet  
Gauge (AWG)/Cord: 10 (STW 3/C)



**\$99.99**

## 50 AMP. GENERATOR ADAPTOR CORD

Nema 14-50P 120/240V plug to Nema L14-30R 120/240V twist lock receptacle

K-1450P-2

Cord length: 1.5 feet  
Gauge (AWG)/Cord: 10 (STW 4/C)



**\$69.99**



# METAL LATHES & ACCESSORIES



## 7" X 12"

### VARIABLE SPEED MINI METAL LATHE

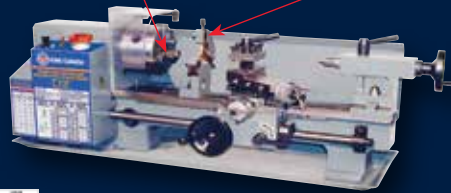
KC-0712ML

- 3/4" spindle bore
- Variable speeds 2 (0-1100, 0-2500 RPM)
- Comes complete with quick change gear box, face plate, replacement gears, 4-way tool post, MT#2 dead center, threading dial indicator

**\$1099.**

5.5 Amp.  
(110V)

**INCLUDES - 4"- 3 JAW CHUCK & STEADY REST**



## 10" X 22"

### BELT DRIVE METAL LATHE

KC-1022ML

- 1" spindle bore
- Spindle speeds 6 (150-2400) RPM
- Comes complete with 5"-3 jaw chuck, 6-1/2"-4 jaw chuck, replacement gears, 4 way tool post, steady rest, follow rest, 8" face plate, thread chasing dial indicator, MT#3 dead center, full length splash guard, tool box, and chuck key

**\$3399.**

12 Amp.  
(110V)

**OPTIONAL  
CABINET  
STAND  
SS-1022**



**\$399.99**



## 12" X 36"

### GEARHEAD METAL LATHE

KC-1236ML/SS-1236

- 1 1/2" spindle bore
- Spindle speeds 9 (60-1500) RPM
- 40(4-112 T.P.I.) 30(2 - 4.5mm) thread cutting
- Comes complete with 6"-3 jaw chuck, 8"-4 jaw chuck, imperial and metric gears, quick change tool post, steady rest, follow rest, 10" DI-4 camlock face plate, thread chasing dial indicator, MT#3 dead center, MT#3 arbor taper, 1/2" drill chuck, full length splash guard, tool box, and chuck keys

KC-1236ML/SS-1236

**\$5999.**

1.5 HP  
(220V)

**WITH TAPER ATTACHMENT  
KC-1236ML/KM-053/SS-1236**

**\$6499.**



**BONUS  
CABINET STAND  
INCLUDED**

## 14" X 40"

### GEARHEAD METAL LATHE

KC-1440ML-2

- Spindle speeds 8(70-2000 RPM)
- 34(4-56 T.P.I.) 26(4 - 7mm) thread cutting
- Comes complete with 7"-3 jaw chuck, 8"-4 jaw chuck, replacement gears, quick change tool post, steady rest, follow rest, 12" DI-5 camlock face plate, coolant system, full length splash guard, thread chasing dial indicator, 2 MT#3 dead centers, MT#6-MT#3 sleeve, tool box, chuck keys, and cabinet stand with foot brake

KC-1440ML-2

**\$9499.**

2 HP  
(240V)

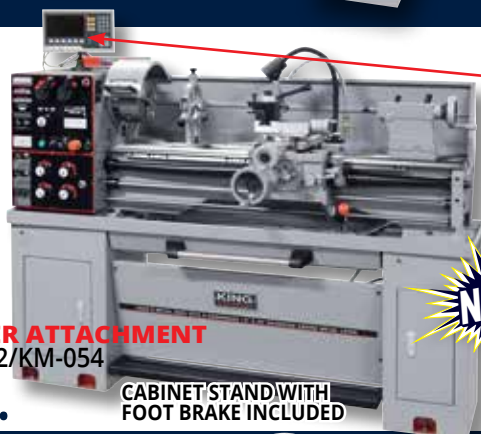
2" Spindle Bore

**WITH TAPER ATTACHMENT**

**KC-1440ML-2/KM-054**

**\$9999.**

**CABINET STAND WITH  
FOOT BRAKE INCLUDED**



## TAPER ATTACHMENT



**Taper Attachment must be  
ordered together with**

These Taper Attachments are designed to fit our 12" x 36", 14" x 40" & 16" x 40" Metal Lathes models

KC-1236ML, KC-1440ML-2 & KC-1640ML

**7 PC. QUICK CHANGE  
TOOL POST KITS**



**KOCT-0012**  
Fits most lathes up to 0 to 12" swing

**\$249.99**

**KOCT-1015**  
Fits most lathes between 10" to 15" swing

**\$399.99**

**KOCT-1318**  
Fits most lathes between 13" to 18" swing

**\$499.99**

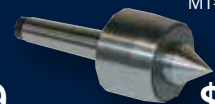
## LIVE CENTERS

**KLC-2M**  
TAPER SHANK -  
MT#2

**\$69.**

**KLC-3M**  
TAPER SHANK -  
MT#3

**\$79.**



## 16" X 40"

### HIGH PRECISION "TOOL ROOM" METAL LATHE

KC-1640ML

- Spindle speeds 16(45-1800 RPM)
- 2" spindle bore diameter
- 45(2-72 T.P.I.) thread cutting
- Comes complete with 8"-3 jaw chuck with inside & outside jaws, 12"-4 jaw chuck, quick change tool post and two 3/4" tool holders, steady and follow rests with roller guides, 14" (D1-6) camlock face plate, MT #4 standard dead centre, MT #4 carbide tipped dead centre, MT #4 to MT #6 spindle sleeve adapter, coolant system, manual micrometer carriage stop, tool box and wrenches

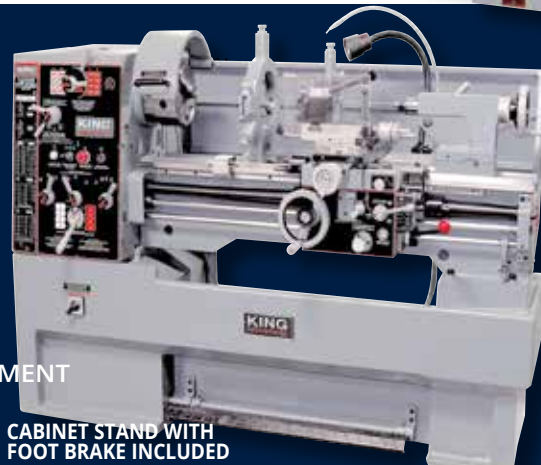
KC-1640ML

**\$16999.**

4 HP  
(600V)

**WITH TAPER ATTACHMENT  
KC-1640ML/KM-055**

**\$17499.**



**CABINET STAND WITH  
FOOT BRAKE INCLUDED**



2 axis (X, Y) digital  
readout (DRO)



Line interruption  
switch system  
and safety guard with  
limit switch protection

**NEW**

**WITH DIGITAL READOUT**

**KC-1440ML-2/54/DRO**

**\$10,999.**

## 7 PC. CARBIDE CUTTER HOLDERS

- 2 positions carbide indexable Cutter Inserts (5pc.)
- H.S.S. inserts (2pc.)

**INCLUDED**  
Screwdriver and  
3 adjustment keys



**KM-047**  
3/8" Shank

**\$199.**

Fits Models:  
KC-0712ML, KC-1022ML



**KM-057**  
5/8" Shank

**\$219.**

Fits Models:  
KC-1236ML, 1440ML-2  
1440ML-6, KC-1640GH,  
KC-1640ML & KC-1660GH