



April - June 2026

# TOOLSHOP

g2stobeq.ca



# NEW Products and more!

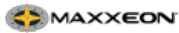
Page 18



## MTC-53551 **\$849<sup>45</sup>** Automotive A/C Leak Testing Kit

- R134a & R1234yf compatible
- Kit includes:
  - #MTC-55975: IntellaSense III Combustible Gas Leak Detector
  - #MTC-53000-TG-ASSY: Automotive Tracer Gas Kit (nitrogen-hydrogen tracer gas) for R1234yf/R134a

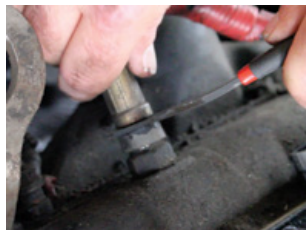
Page 19



## MXN-03365 **\$271<sup>45</sup>** WorkStar® SCRUTINEER UV Pistol-Grip Inspection Light with Laser Targeting

- UV-A beam: 365 nm
- Red laser dot ensures quick and accurate targeting, even in bright daylight
- Applications: leak detection, adhesive curing, and non-destructive testing and crack detection
- Rechargeable

Page 24



## LIS-38500 **\$82<sup>35</sup>** 4-Pc STC® Fitting Release Tool Set

- Sizes #6, #8, #10, #12
- Works on Ford 6.0L/7.3L high pressure oil lines
- Also works on Case International and John Deere tractors: hydraulic lines, power steering lines, cooler lines and brake lines

## AUTEL MAXIALIGN

Page 35



## AUL-IWA500 IWA500 Alignment Frame with Set of 4 Rim Clamps & Tablet

- Standard alignment system focused on speed, precision, and repeatability
- Broad vehicle coverage: U.S., Asian, and European models from 1975-current
- Guided workflow with server-based vehicle identification and OEM alignment specifications
- Includes 10.1-inch touchscreen wireless MaxiAlign IWA500 tablet with Bluetooth MaxiVCI V200
- Mobile five-camera system delivers real-time, highly accurate measurements. Bay-to-bay portability maximizes shop flexibility and uptime. Faster setups and adjustments with real-time feedback
- Core alignment measurements, including rolling diameter and symmetry values and Advanced measurements such as bump steer, raised vehicle checks, and wheel-off adjustment
- MaxiToe technology centers the steering wheel without a holder. Supports SAS calibration and other OEM-required post-alignment tasks
- Highly detailed, validated alignment reports that are easy to save, print, or share digitally
- Includes four rim clamps with positioning targets and essential accessories: two wheel chocks, brake pedal depressor, steering wheel holder stand tool, equipment cover, tablet holder, and AC and 12/24 V power cords
- One year of tablet software updates and Limited Warranty coverage



**AUTEL MAXISYS**

# 5-YEARS EXTENDED SOFTWARE & HARDWARE COVERAGE



## MS906 MAX

PROFESSIONAL DIAGNOSTIC TABLET  
WITH BLUETOOTH VCI  
P/N: MS906MAX5YR

## MX900

ADVANCED SERVICE +  
ALL SYSTEMS DIAGNOSTICS  
P/N: MX9005YR

**SAVE 50% ON FIVE YEARS OF CONTINUOUS ENHANCEMENTS, EXPANDED OE-LEVEL CAPABILITIES, AND THE LATEST MODEL SUPPORT ON TWO OF AUTEL'S MOST TRUSTED TABLETS.**

VALID FROM JANUARY 1, 2026 - JUNE 30, 2026



SCAN OR VISIT:  
[AUTEL.CC/5YEAR-PROMO](https://www.autel.cc/5year-promo)



1.855.288.3587  
[USSUPPORT@AUTEL.COM](mailto:USSUPPORT@AUTEL.COM)

WEB: [AUTEL.COM](https://www.autel.com)  
FOLLOW US: @AUTELTOOLS

**AUTEL**

# AUTEL MAXIHVAC

# AC909 YESTERDAY'S A/C IS TODAY'S THERMAL MANAGEMENT SYSTEM

From electronically controlled compressors to advanced heat pumps, modern vehicles demand diagnostic tools built for this new era – intelligent, connected, and precise.



FULL PRODUCT DETAILS  
SCAN OR VISIT:  
[AUTEL.CC/AC909](http://AUTEL.CC/AC909)

### LARGE BACKLIT SIGHT GLASS

For excessive UV dye, oil contaminants, component failures caused by heat, and solid particulates

### 4-PORT MANIFOLD

## COMING 2026 Q2

The **Autel MaxiHVAC AC909** surpasses today's all-in-one A/C machines that only remove, recycle, and recharge refrigerant, empowering technicians to diagnose the entire system and repair the root cause.

Our new Graphical Diagnostics and Sensor Fusion technology allows for simultaneous live data views of actual pressure and temperature readings, coupled with OBD values from any module displayed on a single screen.

Adapting proven processes from the modern commercial HVAC world, the AC909 reclaims the lost art of true diagnostics. The MaxiHVAC AC909 changes the status quo by giving technicians the *why* behind every test, the *how* behind every function, and the *most precise tools* to diagnose and fix issues with confidence.



1.855.288.3587  
USSUPPORT@AUTEL.COM



NEW 2-DAY A/C COURSE  
COMING SOON

WEB: [AUTEL.COM](http://AUTEL.COM)  
FOLLOW US: @AUTELTOOLS

# AUTEL

Page  
3

## RPT™ L-Keys

**GPE-LKHM9LS:** 9-PC RPT Long Metric Hex L-Key Set \$150.95

**GPE-LKHS13LS:** 13-PC RPT Long SAE Hex L-Key Set \$169.85



## RPT™ Triple Squares

**GPE-TS12S:** 12-PC 1/4", 3/8" & 1/2" Drive Short Triple Square Bit Socket Set \$294.15

**GPE-ITS12S:** 12-PC 1/4", 3/8" & 1/2" Drive Short Impact Triple Square Driver Set \$308.85



## G-FORS™ Master Socket Extractor Sets

**GPE-MX32S:** 32-PC G-FORS 1/4" & 3/8" Drive Standard Metric & SAE Master Socket Extractor Set \$882.45

**GPE-MX32DS:** 32-PC G-FORS 1/4" & 3/8" Drive Deep Metric & SAE Master Socket Extractor Set \$1176.65



## RPT™ Dual Action Drivers

**GPE-DDHBM9S:** 9-PC RPT 3/8" Drive Low-Profile Metric Hex Set \$205.85

**GPE-DDSB8S:** 8-PC RPT 3/8" Drive Low-Profile Star Set \$191.15

**GPE-DDHBS6S:** 6-PC RPT 3/8" Drive Low-Profile SAE Hex Set \$191.15

**GPE-DDTS12S:** 12-PC RPT 1/4" & 3/8" Drive Low-Profile Triple Square Set \$250.05



## Low-Profile Ratchet

**GPE-DFRA6572:** 1/4" Drive Standard Flex Head & 7/16" Hex Low-Profile Dual Action Driver Ratchet \$117.65



**GPE-MXC13S:** 13-PC G-FORS 1/2" Drive Short Metric & SAE Master Socket Extractor Set \$588.35

**GPE-MXC13DS:** 13-PC G-FORS 1/2" Drive Deep Metric & SAE Master Socket Extractor Set \$808.95



## RPT™ Hand Drive Special Promo #1 | Save \$149.95!

Ordering Part # GPE-ESTLBOGO | \$514.75

14-PC RPT 1/4", 3/8" & 1/2" Drive Short E-Star Socket Set (GPE-ES14S) \$264.75



**GPE-STA9LS:** 9-PC RPT 1/4" Drive Long Star Driver Set

**BUY THIS COMBO**

14-PC RPT 1/4", 3/8" & 1/2" Drive Short Star Driver Set (GPE-GE14STSRPT) \$250.05

**GET THIS FREE!**



## RPT™ Hand Drive Special Promo #2 | Save \$142.65!

Ordering Part # GPE-HSTBOGO | \$551.55

**BUY THIS COMBO**

20-PC RPT 1/4" Drive Short Metric & SAE Hex Driver Set (GPE-HA20S) \$257.35



16-PC RPT 3/8" Drive Short Metric & SAE Hex Driver Set (GPE-HB16S) \$294.15

**GPE-GE9ASTSRPT:** 9-PC RPT 1/4" Drive Short Star Driver Set

**GET THIS FREE!**



Seasonal Deals  
April 1 - June 30, 2026

## GEAR UP FOR THE SUNNY DAYS



**\$447<sup>75</sup>**  
**M18 FUEL™ Dual  
 Battery Blower**  
 - Tool Only (2824-20)



**M12 FUEL™ HATCHET™  
 6" Pruning Saw - Tool Only**  
 (2527-20)



**\$1009<sup>75</sup>**  
**M18 FUEL™ 21" Self-Propelled  
 Dual Battery Mower**  
 - Tool Only (2823-20)



**M18™ Brushless Fan w/  
 PACKOUT™ Compatibility**  
 - Tool Only (0818-20)



**\$138<sup>95</sup>**  
**M12™ Mounting  
 Fan - Tool Only**  
 (0820-20)



**\$358<sup>95</sup>**  
**PACKOUT™  
 40QT XL Cooler**  
 (48-22-8462)



**\$118<sup>95</sup>**  
**PACKOUT™  
 Soft Cooler**  
 (48-22-8302)



**PACKOUT™  
 25oz Bottle w/ Chug Lid**  
 Red (48-22-8371R)  
 Black (48-22-8371B)

# WORK IN DEMANDING CONDITIONS.

WITH 2X CORROSION RESISTANCE\*\* THAT PROMOTES LONG LIFE



8 IN. AND 10 IN. SLIDELOCK PLIERS SET (2 PACK)

DEW-DWHT82824

**\$62<sup>65</sup>**



14 PIECE CORDLESS SCREWDRIVER SET WITH FLEXDRIVE™ CONTROL

DEW-DWHT66719



20V MAX\* ATOMIC COMPACT SERIES™ BRUSHLESS CORDLESS 1/2 IN. EXTENDED REACH RATCHET (TOOL ONLY)

DEW-DCF512EB

**\$356<sup>65</sup>**



20V MAX\* CORDLESS 10,000 PSI VARIABLE 2-SPEED GREASE GUN KIT

DEW-DCGG581GD1



20V MAX\* XR® 1/2 IN. HIGH TORQUE IMPACT WRENCH WITH HOG RING ANVIL WITH (1) 5.0 AH BATTERY & CHARGER KIT

DEW-DCF900P1



ATOMIC COMPACT SERIES™ 20V MAX\* 4 IN. ANGLE GRINDER (TOOL ONLY)

DEW-DCG400B

**\$410<sup>85</sup>**



12V MAX\*/20V MAX\*/ FLEXVOLT® 8 AMP FAN COOLED MULTIPORT FAST CHARGER

DEW-DCB104



ELITE SERIES® SOCKET ADAPTERS

1/4 IN. X 6 IN. DEW-DWAF6ADPT14  
3/8 IN. X 6 IN. DEW-DWAF6ADPT38  
1/2 IN. X 6 IN. DEW-DWAF6ADPT12

DWAF6ADPT14 \$12<sup>25</sup>  
DWAF6ADPT38 \$12<sup>25</sup>  
DWAF6ADPT12 \$12<sup>25</sup>



3 PIECE BALL PEIN HAMMER SET (32/40/48 OZ)

PRO-J1303AVPS

**\$244<sup>95</sup>**



TORQUE MULTIPLIER 3200 FT-LBS

PRO-J6232

**\$5325<sup>45</sup>**

Copyright ©2025 DEWALT. The following are examples of trademarks for one or more DEWALT power tools and accessories: The yellow and black color scheme; the "D"-shaped air intake grill; the array of pyramids on the handgrip; the kit box configuration; and the array of lozenge-shaped humps on the surface of the tool.

\*Maximum initial battery voltage (measured without a workload) is 20 volts. Nominal voltage is 18.

\*\*Compared to DWHT74426, DWHT74427, DWHT74429, DWHT74431, DWHT74432 DEWALT® Push-Lock Pliers

# GEARWRENCH

## DIAGNOSTICS THAT BREAK ALL THE RULES

As the dedicated handheld diagnostic tool in the GEARWRENCH lineup, the GWSMART05 delivers true professional capability in a compact 5" device. Technicians will have access to OE-level diagnostics, full bidirectional control, intelligent DTC analysis, live data graphing, and 31+ essential reset/relearn functions, all without subscriptions or fees. With fast processing, a bright high-visibility display, and rugged shop-ready construction, the GWSMART05 provides technicians with a powerful, reliable, grab-and-go solution for everyday diagnostics.

### 5" HANDHELD BIDIRECTIONAL DIAGNOSTIC TOOL

■ **31+ Pro Vehicle Reset/Relearn Functions**

Throttle matching, ABS bleeding, steering angle calibration, injector coding, battery resets, transmission adaptations, TPMS resets, and more

■ **Full Bidirectional Control**

Activate components, run system tests, and command modules in real time with professional accuracy

■ **View, Graph, Compare Critical Sensor Data**

In real time to quickly identify irregularities and confirm system status helping technicians isolate issues faster

■ **Free Lifetime Updates**

No subscriptions, no renewals and no added costs

■ **Fully AutoAuth/Secure Gateway-Ready**

Allows performance of full-system diagnostics, bidirectional tests, and service functions on secure platforms with proper authentication



**LIMITED  
TWO YEAR  
WARRANTY**

-  FULL SYSTEM DIAGNOSTICS™
-  FREE LIFETIME UPDATES™
-  LIVE DATA STREAMS™
-  31 RESET FUNCTIONS™
-  BIDIRECTIONAL™
-  WORKS WITH 180+ CAR BRANDS™
-  NO SUBSCRIPTION FEES™

Cat. No.	Description	Diagnostic Capacity	Warranty	Software Updates
<b>GWSMART05</b> <b>\$479<sup>95</sup></b>	5" Handheld Bidirectional Diagnostic Tool	Covers 180+ Car Manufacturers, Wireless Diagnostics, Full Bidirectional Control, 31+ Pro Vehicle Reset/Relearn Functions, Live Data Streams, Fully AutoAuth/Secure Gateway Ready	2 Year Limited Warranty	<b>Free</b> Lifetime Updates and no subscription fees

# GEARWRENCH

## DIAGNOSTICS THAT BREAK ALL THE RULES

Command it all – every function, every fix, every vehicle. GEARWRENCH is changing the game with the GWSMART10. This advanced tool offers full system diagnostics, bidirectional programming, topology mapping, 51 reset and relearn functions and live data mapping – all without compromise. With coverage of more than 180 vehicle manufacturers, a 2-year warranty, and 3 years of free software updates, GEARWRENCH delivers unmatched value and performance. Discover a new standard in automotive diagnostics – one that truly delivers.

### 10" PRO COMMAND WIRELESS BIDIRECTIONAL DIAGNOSTIC TABLET

#### 51 Pro Vehicle Reset/Relearn Functions

ABS bleeding, steering angle calibration, injector coding, battery resets, throttle matching, transmission adaptations, TPMS reset, and more

#### Advanced System Intelligence

Topology mapping for fast, visual system analysis

#### Full Bidirectional Control

Activate components, run system tests, and command modules in real time with professional accuracy

#### High-Speed Wireless VCI Included

Connects instantly with no cables, no clutter and no limits

#### Fully AutoAuth/Secure Gateway-Ready

Allows performance of full-system diagnostics, bidirectional tests, and service functions on secure platforms with proper authentication

#### Premium 10" Tablet

Engineered for full-time shop use, powerful processor, fast 5GHz Wi-Fi, long-life battery and rugged housing

#### Hi-Speed Wireless VCI, Rapid-Charge Dock, OBDII Main Cable, & Full 16-Piece Global OBD Connector Set Included

Stored in blow mold carrying case with designated space for all components

#### 3-Year FREE Software Updates

Only \$150/year after first 3 years

#### Identifix Direct-Hit Ready

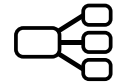
Access OE manuals, wiring diagrams, and verified fixes at an exclusive discount



FULL SYSTEM DIAGNOSTICS



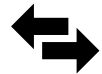
3 YEARS OF FREE UPDATES



TOPOLOGY MAPPING



51 RESET FUNCTIONS



BIDIRECTIONAL



LIVE DATA MAPPING



WORKS WITH 180+ CAR BRANDS

**FREE!**  
While quantities last

Buy #GWR-GWSMART10 and obtain #GWR-GWSCOPE for free: 8.5mm High-Definition Flexible Inspection Endoscope.



**LIMITED TWO YEAR WARRANTY**

Cat. No.	Description	Diagnostic Capacity	Warranty	Software Updates
GWSMART10 <b>\$2699<sup>95</sup></b>	10" Pro Command Wireless Bidirectional Diagnostic Tablet with Rapid-Charge Dock	Covers 180+ Car Manufacturers, Wireless Diagnostics, Full Bidirectional ECU control, 51 Pro Vehicle Reset/Relearn Functions, Topology Mapping, Key Programming, Identifix Direct-Hit Ready, Fully AutoAuth/Secure Gateway Ready	2 Year Limited Warranty	3-Year <b>FREE</b> Updates

# GEARWRENCH

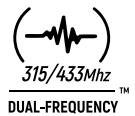
## DIAGNOSTICS THAT BREAK ALL THE RULES

The GEARWRENCH GWTPMS Universal Tire Pressure Monitoring System Programming & Diagnostic Tool is the ultimate solution for full TPMS control. Designed for speed and precision, it programs, activates, and relearns TPMS sensors across nearly every make and model with dual frequency 315MHz & 433MHz compatibility. Featuring a vivid 4" color display, wireless updates, and free lifetime software, the GWTPMS empowers technicians to diagnose and clear TPMS issues in seconds, keeping every vehicle and every shop running at full pressure.

### UNIVERSAL TIRE PRESSURE MONITORING SYSTEM PROGRAMMING & DIAGNOSTIC TOOL

- Clear TPMS warning lights**  
 Clear TPMS warning lights on nearly any vehicle in seconds
- 315/433MHz Dual Frequency**  
 Works with both 315 MHz and 433 MHz sensors for maximum coverage
- Program Up To 8 Sensors Simultaneously**  
 Seamlessly programs all GEARWRENCH branded TPMS sensors, up to 8 simultaneously
- FREE Lifetime Updates**  
 No subscriptions, no renewals and no added costs
- Read/Clear TPMS Codes**  
 Check sensor ID, position, pressure, temperature, and battery status
- Full ECU-ID verification**  
 Confirms sensor matching status and OE data accuracy

- Flexible USB Type-C or Wi-Fi Connection**  
 Options allow for wireless or wired connectivity
- Includes GWTPMS Tool, OBD Cable, USB-C Charger and Adapter**



GWTPMS



**LIMITED  
TWO YEAR  
WARRANTY**

### UNIVERSAL PROGRAMMABLE TPMS SENSORS



**GWTPMSM**  
Universal Programmable Metal TPMS Sensor

- Compatible with 99% of Vehicles Worldwide**  
 For universal fitment and coverages
- Activates, Relearns & Programs 315 MHz & 433 MHz Sensors**  
 Compatible with GEARWRENCH, OE and aftermarket sensors for universal coverage

- 100% ID Cloneable Sensor**  
 Replicates OE sensor IDs so no relearn is required



**GWTPMSR**  
Universal Programmable Rubber TPMS Sensor

Part No.	Description	
GWTPMS	Universal Tire Pressure Monitoring System Programming & Diagnostic Tool	<b>\$237.55</b>
GWTPMSM	Universal Programmable Metal TPMS Sensor	<b>\$24.95</b>
GWTPMSR	Universal Programmable Rubber TPMS Sensor	<b>\$24.95</b>

# NEW Products and more!

Page 40 **LAUNCH**

LAU-301190908 **\$6447<sup>05</sup>**  
**Tech X-431 Torque AutoHD Pro - All-In-One Diagnostic Tool for Cars & Heavy-Duty Trucks**

- Covers Class 1-8 vehicles with OE-level precision
- OBD II full function
- Full system diagnostics • Topology mapping
- Tech 2 Tech remote diagnosis
- Auto VIN identification • Wi-Fi updateable
- Security Gateway access via AutoAuth
- Code Assist by Identifix
- VW & AUDI guided function
- CAN FD • 10.1" screen
- 128GB of storage • 4GB of RAM
- 2.0 GHz 4-core processor
- Includes 1-year Fix HD and 1-year Fix Auto repair database



Page 40

**LAUNCH**



LAU-301181163 **\$3514<sup>35</sup>**  
**Smartlink HD - Add On Connectors Kit for Heavy-Duty Vehicles**

- Heavy duty add on for Launch Torque Link & Throttle V scan tools
- Compatible with trucks, buses, construction vehicles, agricultural machinery, trailers, and vessels, covering a broad range of heavy-duty vehicles

Page 58

**GEARWRENCH**



GWR-GWScope **\$138<sup>85</sup>**  
**High Definition Inspection Scope**

- 8.5mm cable
- 4 brightness levels
- Photo & video capture with 70° field of view
- 59" USB-C enables compatibility with Gearwrench diagnostics tools, smartphones, tablets & computers

Page 63

**DEWALT**

DEW-DCD806B   
**20V MAX\* XR® Brushless 1/2" Hammer Drill (Bare Tool)**

- Clutch settings: 15
- 0-650/0-2,000 RPM
- 1050 Max. Watts Out



Page 63

**DEWALT**

DEW-DCD801B   
**20V MAX\* Premium Brushless Compact 1/2" Drill/Driver (Bare Tool)**

- Clutch settings: 15
- 0-650/0-2,000 RPM
- 3-mode LED



# NEW Products and more!

Page  
94



Made in Canada



PT15/20



HTG23/30



VT Series



HT24/120-575

## Airtek Air Compressors

- A wide range of robust air compressors, including vertical, horizontal, and gas-powered options, all manufactured in Canada.

Item #	Motor HP	Tank	Stage	CFM	Max. PSI	Motor RPM	Phase	Voltage	Weight	Dimensions L x W x H
ATK-PT15/20	5.5 HP Peak	PORTABLE 20 Gallon - H	1	5.3 @ 90 PSI	125 PSI	3600 RPM	1-Phase	110V / 220V 15A / 7.5A	161 Lbs	42" x 21" x 31"
ATK-HTG23/30	13 HP	GAS-POWERED 30 Gallon - H	2	24.4 @ 150 PSI	175 PSI	3600 RPM	N/A (Gas)	N/A (Gas)	450 Lbs	44" x 20" x 43"
ATK-VT17/80-220	5 HP	80 Gallon - V	1	24.4 @ 150 PSI	150 PSI	1740 RPM	1-Phase	220V 20A	460 Lbs	36" x 25" x 68"
ATK-VT17/80-575	5 HP	80 Gallon - V	1	24.4 @ 150 PSI	150 PSI	1740 RPM	3-Phase	575V 5A	460 Lbs	36" x 25" x 68"
ATK-VT22/80-220	5 HP	80 Gallon - V	2	19.6 @ 150 PSI	175 PSI	1740 RPM	1-Phase	220V 20A	460 Lbs	36" x 25" x 68.5"
ATK-VT22/80-575	5 HP	80 Gallon - V	2	19.6 @ 150 PSI	175 PSI	1740 RPM	3-Phase	575V 5A	460 Lbs	36" x 25" x 68.5"
ATK-VT18/80-220	7.5 HP	80 Gallon - V	1	30.4 @ 150 PSI	150 PSI	1740 RPM	1-Phase	220V 30A	490 Lbs	36" x 25" x 72"
ATK-VT18/80-575	7.5 HP	80 Gallon - V	1	30.4 @ 150 PSI	150 PSI	1740 RPM	3-Phase	575V 7A	490 Lbs	36" x 25" x 72"
ATK-VT23/80-220	7.5 HP	80 Gallon - V	2	27.3 @ 150 PSI	175 PSI	1740 RPM	1-Phase	220V 30A	490 Lbs	36" x 25" x 72"
ATK-VT23/80-575	7.5 HP	80 Gallon - V	2	27.3 @ 150 PSI	175 PSI	1740 RPM	3-Phase	575V 7A	490 Lbs	36" x 25" x 72"
ATK-HT24/120-575	10 HP	120 Gallon - H	2	37.8 @ 150 PSI	175 PSI	1740 RPM	3-Phase	575V 10A	1000 Lbs	78" x 26" x 51"



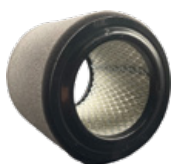
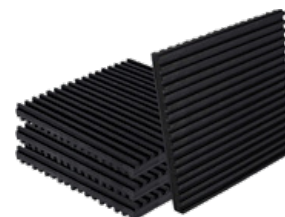
## ATK-ACL130 \$145<sup>45</sup> Premium Air Compressor Oil, 1 Gallon

- This high-performance oil is specially formulated to reduce friction, minimize wear, and protect components from corrosion



## ATK-AVP \$91<sup>55</sup> Anti-Vibration Pads, Set of 4

- These pads effectively dampen vibrations, reducing the risk of damage and wear to your equipment



## ATK-AFE4 \$47<sup>55</sup> Air Filter Element

- Compatible air compressors models: HT21, HT22, HT23, HT24, HT25, HT27, HT28, VT21, VT22, VT23, VT24
- Compatible air pumps: 15T, 234, 242, 253, 25T2, 3000, 7100, 71T2, 2545



## ATK-IWPT-16-1/4 \$265<sup>45</sup> 1/4" Inlet Electronic Timer Drain, 110V

- Ensures precise and automatic moisture discharge to protect your equipment from damage caused by excess moisture and system failures



# NEW Products and more!

**GRIPEDGE™**

Page  
**116**



**RPT™ TRIPLE SQUARE Chrome Sockets**

Item #	Drive	Length	Set	Range	
GPE-MTS39S	1/4", 3/8", 1/2"	Low Prof., Standard, X-Long	39-Pc Master Set	M4 - M18 MT14 - MT18	<b>\$808.95</b>

**GW GEARWRENCH**

Page  
**128**



GWDE72

**VDE 1000V Insulated Essential Tool Sets**

Item #	Set	
GWR-GWDE20	20-Piece	<b>\$581.65</b>
GWR-GWDE39	39-Piece	<b>\$799.85</b>
GWR-GWDE72	72-Piece	<b>\$1575.05</b>

**ES**

Page  
**128**



ESI-560 **\$507<sup>75</sup>**  
**Milliohm Meter for Hybrid and EV Stator Windings, CAT III 1000 Volts**

- Checks stator windings for inconsistent or out of range resistance which leads to drivability problems
- Low resistance: 0-40Ω
- Resistance: 0-40 MΩ
- Voltage DC: 0-1000V
- Voltage AC: 0-750V
- AC/DC current: 0-400mA
- Capacitance: 0-40mF
- Continuity test: audible beep ≤40 Ohm

Page  
**129 & 240**

**TITAN**



TIT-21130 **\$30<sup>75</sup>**  
**4-Pc Jack Pad Set for Tesla® Models S, 3, X, Y**

- Rubber pads designed to protect the battery, vehicle body, and chassis

Page  
**129**

**JohnDow Industries**



JDI-VFB1  
JDI-VFB3326

JDI-WRFB

**Vehicle Fire Blanket and Wall Rack**

Item #	Description	
JDI-JDI-VFB1	Fire Blanket: 19.5 ft. x 29.5 ft. (6m x 9m) 575 sq. ft.	<b>\$2911.25</b>
JDI-JDI-VFB3326	Fire Blanket: 26 ft. x 33 ft. (8m x 10m) 858 sq. ft.	<b>\$4362.05</b>
JDI-JDI-WRFB	Fire Blanket Wall Rack	<b>\$226.45</b>

# NEW Products and more!

Page  
131

**VESSEL**



**\$266<sup>55</sup>**

VST-400ER21MU

### e-ASSIST Electric & Manual MINI Ratchet Wrench Set

- 8.5" Long 60-tooth ratchet
- No-load speed: 400 RPM
- Electric output: 8.85 lbf-in
- Manual torque: 531 lbf-in (44 ft-lbs)
- 1/4" & 3/8" socket adapters
- (10) Sockets: H5-H14
- (3) Phillips bits: #1, #2, #3
- (2) Slotted bits: SL4, SL6
- (5) Hex bits: H2, H2.5, H3, H4, H5, H6
- (7) Torx® bits: T10, T15, T30, T25, T27, T30, T40
- (2) Extension bars: 3" & 5" • (1) Universal joint
- USB-C charge cable • Storage case



Page  
139

**GW GEARWRENCH**



GWR-MEGAMOD1858

### 1858-Pc MEGAMOD Mechanics Tool Set in Premium Modular Foam Trays with Tool Storage & Shop Equipment



Page  
139

**GW GEARWRENCH**



GWR-MEGAMOD1629

### 1629-Pc MEGAMOD Mechanics Tool Set in Premium Modular Foam Trays with Tool Storage & Shop Equipment



Page  
139

**GW GEARWRENCH**



GWR-MEGAMOD1331

### 1331-Pc MEGAMOD Mechanics Tool Set in Premium Modular Foam Trays with Tool Storage & Shop Equipment



Page  
140

**Astro**

6

AST-78312

**\$77<sup>35</sup>**

### 11-Pc 3/8" Drive 6 Point Low Profile Nano Impact Socket Sets on a Rail

- All sockets feature a outside hex for increased access when used with a wrench
- Range: 9.5mm - 19.5mm
- Outside Hex: 17mm



Page  
142



1326MSD

1319SD

6

### 6 Point Impact Socket Sets

Item #	Drive	Piece Count	Size Range	
<b>SEMI-DEEP Length Sets</b>				
GRY-1326MSD	1/2"	26-Piece	10mm - 36mm	<b>\$465.75</b>
GRY-1319SD	1/2"	19-Piece	3/8" - 1-1/2"	<b>\$364.65</b>

Page  
143

**Astro**

6

AST-78315

**\$255<sup>85</sup>**

### 15-Pc 3/8" Dr. 6 Pt. NANO Pinless Universal Impact Socket Set

- 10mm-24mm



# NEW Products and more!

Page 148 

**GRY-108A \$198<sup>65</sup>**  
**8-Pc Reducing Impact Adapter Set**

- 1"(F) x 3/4" (M)
- 1/2"(F) x 3/8" (M)
- 3/4"(F) x 1" (M)
- 3/8"(F) x 1/2" (M)
- 3/4"(F) x 1/2" (M)
- 3/8"(F) x 1/4" (M)
- 1/2"(F) x 3/4" (M)
- 1/4"(F) x 3/8" (M)



Page 152 

**CTA-9268 \$26<sup>75</sup>**  
**4.5" Long 1/2" Drive TP60 Torx Plus® Bit Socket for BMW**

- Used for wheel hub and bearing service, flywheel bolt removal, and rear wheel bearing bolts with ABS clearance on various BMW models
- Compare to BMW factory tool #2472903



Page 170 

**1/2" Drive Torque Wrenches**

Item #	Style	Torque	Increm.	Length	
AST-91350	Micrometer Style	70-350 ft-lb	2 ft-lb	31.5"	<b>\$354.75</b>
AST-91350D	Digital	13-350 ft-lb	0.1 ft-lb	33.5"	<b>\$397.05</b>



Page 202

**GRI-60234 \$59<sup>95</sup>**  
**4-Pc Heavy Duty Rolling Head Pry Bar Set**

- 6", 12", 16", 20"



Page 211 

**GWR-BXMINIS \$38<sup>85</sup>**  
**2-Drawer Mini Toolbox**

- 20 Gauge steel body
- Hang hook design
- 11" x 6" x 6"



Page 213 

**STN-STST19331 \$23<sup>75</sup>**  
**19" ESSENTIAL™ Toolbox**

- Two lid organizers for small parts storage – accessible without opening the tool box
- Removable tool tray
- Built-in pad lock eye for small locks
- 19" L x 10" W x 9.9" H
- Tools not included



Page 273 

**DEW-DCMWSP650Y2-CA \$600<sup>00</sup>**  
**60V MAX\* Brushless 21.5" Rear Wheel Drive, Self-Propelled Mower Kit**

- Min./Max. cutting height: 1.5" to 4"
- Dual blades
- 3-in- versatility: mulching, bagging, and side discharge options
- Auto sensing technology increases RPMs for thick conditions
- (2) 20V/60V MAX\* 12.0 Ah batteries
- (2) Chargers



Page 273 

**DEW-DCST926B \$200<sup>00</sup>**  
**20V MAX\* Folding String Trimmer (Bare Tool)**

- 13-15" cutting swath
- Accepted lines: 0.080" & 0.095"
- 40% shorter folded length



Page 278 

**LIS-49010 \$80<sup>85</sup>**  
**Throttle Pedal Depressor**

- Holds throttle at a constant RPM
- 2-pc design
- Nylon hook

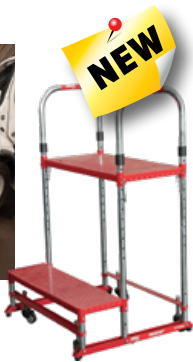


# NEW Products and more!

Page 279 **STECK**  
Innovative mobility, rest and equipment

STK-STC20360 **\$558<sup>65</sup>**  
**ProStep™ 2 Heavy-Duty Adjustable Shop Step Platform**

- Step surface: Diamond plate/perforated for slip resistance
- Adjustable steps for comfort and access
- Overall height: 53"
- Base width: 29"
- Integrated wheels for portability



Page 286 **Zep**



**FLASH - Fast-Acting, Heavy Duty Floor Cleaner with Orange Fragrance**

- Rapidly penetrates, cuts, and lifts dirt, grease and grime from the pores of concrete and masonry floors

Item #	Size	
ZEP-Q18034C	20 kg Pail	<b>\$143.05</b>
ZEP-Q18043C	60 kg Drum	<b>\$479.35</b>



**Floor Sweeping Compound**

- Holds down dust on both hard and soft floors for easy sweeping and maximum dust and dirt absorbency
- No slippery or oily residue

Item #	Size	
ZEP-CASWEEP10	10 Lbs Box	<b>\$16.45</b>
ZEP-CN50SWEEP	50 Lbs Bag	<b>\$36.15</b>



ZEP-R45810C **\$17<sup>45</sup>**  
**Industrial Purple Degreaser & Cleaner, Concentrated**

- Dissolves extreme buildup of grease, oil and dirt with no scrubbing from engines, heavy equipment, tools and unfinished concrete
- Low-foaming, easy-rinsing formula
- (1) 1 gallon/3.78 L



ZEP-CACIT128 **\$23<sup>05</sup>**  
**Heavy-Duty Citrus Degreaser & Cleaner, Concentrated**

- Dissolves extreme buildup of grease, oil and dirt with no scrubbing
- Low-foaming, easy-rinsing formula • (1) 1 gal/3.78 L



**FORMULA 50 - Heavy Duty, All-Purpose Cleaner and Degreaser**

- Use on all surfaces not harmed by water
- Outstanding cleaning ability on a wide variety of soils such as wax build-up, black marks on floors, fingerprints, and other types of soils

Item #	Size	
ZEP-85954C	4 L	<b>\$21.55</b>
ZEP-85947C	20 L	<b>\$101.85</b>

Page 286 **Zep**



**MORADO - Super Cleaner & Degreaser, Concentrated**

- Designed primarily for extra-heavy-duty industrial cleaning applications
- Product can be applied with a mop, brush, low pressure spray, or automatic scrubbing machine

Item #	Size	
ZEP-85654C	4 L	<b>\$21.95</b>
ZEP-85647C	20 L	<b>\$89.65</b>

Page 286 **Zep**



ZEP-75035 **\$344<sup>05</sup>**  
**ORANGE RESPONSE™ - Citrus Industrial-Strength Degreaser**

- Handles the toughest of oils and greases and even some adhesives
- Made with biodegradable citrus and other natural solvents, detergents, surfactants and emulsifiers
- (1) 5 gallon pail

Page 286 **Multi-Zorb**  
Made in Canada



**Universal Granular Spill Absorbent**

- Superior absorption and encapsulation of liquid spills, leaks and releases
- Dense, penetrative absorbent fully restores surfaces to dry, safe state
- Converts spills to dry granules for fast, easy, "dry-sweep" clean-up
- Non-leaching, landfill-safe
- **Applications:** oil spills, fuels, grease, all chemicals, antifreeze, coolants, solvents, alcohols, pesticides, hydrocarbons, acids (except hydrofluoric acid)

Item #	Size	
MZB-MZB15	1.5 Cubic Foot Poly Bag	<b>\$22.75</b>
MZB-MZP4	1.8 kg Stand-Up Pouch	<b>\$16.05</b>

MZB-MZERB15 **\$25<sup>85</sup>**  
**Universal Granular Spill Absorbent - Emergency Response Blend**

- 1.5 cubic foot bag
- Provides all the spill absorption capabilities of the original formula but is engineered for outdoor use
- Ideal for use in outdoor, windy conditions: the extra-dense formula prevents "fly-away" during application
- **Applications:** Highway accident response, marine, airport, fleet/trucking, public transit



# NEW Products and more!

Page 300



LIS-93102 **\$233<sup>25</sup>**  
**300 Lbs Capacity Plastic Creeper (Yellow)**

- (6) 2" Casters
- Height: 4"
- Floor Clearance: 7/8"
- Dimensions: 38" L x 17-1/2" W



Page 306



**Curved Cross Chisel Hammer**

- Round face: 1-9/16" diameter
- Chisel: 3" long



Item #	Handle	
FMT-153FGB	Fiberglass	<b>\$113.65</b>

Page 306



**General Purpose Pick Hammers**

- Round face: 1-9/16" diameter
- Round point: 3/32" radius
- Length of pick: 3-3/4" long



Item #	Handle	
FMT-158G	Wood	<b>\$94.35</b>
FMT-158FG	Fiberglass	<b>\$106.75</b>

Page 306



**4-Pc Body and Fender Repair Hammer Sets**

- General Purpose Pick Hammer (#158G/#158FG)
- Cross Chisel Curved Hammer (#153GB/#153FGB)
- Utility Pick Hammer (#164G/#164FG)
- Door Skin Hammer (#170G/#170FG)

Item #	Handles	
FMT-694K	Wood	<b>\$409.05</b>
FMT-694KFG	Fiberglass	<b>\$440.35</b>

Page 307



TIT-15100 **\$427<sup>65</sup>**  
**7-Pc Professional Auto Body Hammer Set**

- Includes:
- 15101: Heel Dolly
  - 15102: Thin Toe Dolly
  - 15103: Utility Dolly
  - 15108: Curved Cross Chisel Hammer
  - 15110: Utility Pick Hammer
  - 15112: General Utility Hammer
  - 15113: Light Dinging Spoon



Page 307



**Individual Auto Body Hammers**

Item #	Description	
TIT-15108	<b>Curved Cross Chisel Hammer</b> 1.5" Face Diameter, 1" Chisel	<b>\$80.45</b>
TIT-15109	<b>Cross Chisel Shrinking Hammer</b> 1.5" Face Diameter, 0.7" Chisel	<b>\$97.35</b>
TIT-15110	<b>Short Reach Utility Pick Hammer</b> 1.5" Round Striking Face/Blunt Point Pick	<b>\$74.85</b>
TIT-15112	<b>Long Reach General Purpose Pick Hammer</b> 1.5" Round Striking Face/Blunt Point Pick	<b>\$86.25</b>
TIT-15111	<b>Door Skin Hammer</b> 3-1/2" & 1-5/16" Radius Ends	<b>\$92.55</b>

Page 307



DTF-DF-AB711 **\$581<sup>35</sup>**  
**7-Pc Rubberized Dolly Set**

- Has less bounce back than steel dollies
- The steel core in each dolly has a dense rubber covering that absorbs the harsh impacts
- Works perfectly for aluminum and steel work



Page 311



CTA-8063 **\$53<sup>55</sup>**  
**Conical Eraser Wheel**

- Designed for removing pinstripes, decals, vinyl, and adhesive from tight or curved surfaces like bumpers, wheel wells and door edges
- Comes with quick-connect 1/4" Hex arbor adapter
- Tapered design: 3.5" to 3.1"
- Max. 4000 RPM



# NEW Products and more!

Page 322



IND-IM-IND2011

## Inductor® Max High-Performance Induction Heating System - 120V, 2000 Watts, 20A

- Heats ferrous metals without collateral damage to nearby plastic parts
- Removes vinyl graphics, moldings, auto glass, windshields, mechanical and suspension parts and more
- Includes: - Concentrator® (U-411) - Glass Blaster® (U-311) - Fast-Off® Pad (U-211) - (2) L-Wedges (L-0810A)



Page 322



IND-MD99-690

**\$323<sup>25</sup>**

## 7-Pc Mini-Ductor™ Specialty Coil Kit

- 2", 2-1/4", 2-1/2", 2-3/4", 3", 3-1/4, 3-1/2"



Page 323



## Mini-Ductor® Heat Resistant Pre-Formed Coils

Item #	Type	I.D.	OAL	
IND-MD99-620	Long	3/4"	3-1/4"	<b>\$26.85</b>
IND-MD99-621	Long (L.C.K.)	7/8"	13-1/4"	<b>\$27.55</b>
IND-MD99-622	Long	1"	13-1/4"	<b>\$32.25</b>
IND-MD99-623	Long	1-1/4"	13-1/4"	<b>\$32.85</b>
IND-MD99-624	Long	1-1/2"	13-1/4"	<b>\$33.55</b>
IND-MD99-625	Long	1-3/4"	13-1/4"	<b>\$34.85</b>



IND-MD99-XBB96

**\$70<sup>45</sup>**

## 96" Long Bearing Buddy Coil

- Wraps around bearing housing, expanding housing or other objects where heat is needed



Page 324



VIM-BBQB1

**\$125<sup>05</sup>**

## Double Barrel BBQ Blazer

- Right barrel delivers a concentrated, high-temperature flame for targeted heating
- Left barrel designed for precise air circulation to sustain and regulate the fire
- 4 adjustable levels of flame intensity
- Flame up to 5"



Page 338



LIS-39780

**\$70<sup>35</sup>**

## Brake Spring Fork

- Removes & replaces the S-cam return spring



Page 348



## 1/2" Drive Wheel Torque Limiting Extensions

Item #	Ft-Lb	
TIT-21410	10-Pc Set 65-150 ft-lb	<b>\$213.05</b>
TIT-21411	65 ft-lb	<b>\$23.25</b>
TIT-21412	75 ft-lb	<b>\$23.25</b>
TIT-21413	80 ft-lb	<b>\$23.25</b>
TIT-21414	90 ft-lb	<b>\$23.25</b>
TIT-21415	100 ft-lb	<b>\$23.25</b>
TIT-21416	110 ft-lb	<b>\$23.25</b>
TIT-21417	120 ft-lb	<b>\$23.25</b>
TIT-21418	135 ft-lb	<b>\$23.25</b>
TIT-21419	140 ft-lb	<b>\$23.25</b>
TIT-21420	150 ft-lb	<b>\$23.25</b>



Page 366



OTC-6637

## Strut Tamer II Extreme Strut Taper Compressor (Without Mobile Stand)

- Capable of safely compressing the largest strut springs
- Min./Max. spring diameters: 2-1/2" to 10"
- Vertical stroke: 1-1/4" to 24"



Page 380



CTA-2227

**\$238<sup>05</sup>**

## 5-Pc Exhaust Gas Sensor Socket Set

- For the removal and installation of O2, NOx, and EGT sensors
- 14mm to 24mm



Page 382



CTA-1211

**\$1247<sup>15</sup>**

## VW/Audi/Porsche EA839 Master Timing Tool Kit (TFSI)

- Services the timing systems on modern EA839 3.0L and 2.9L TFSI V6 engines
- Services Audi S4, RS5, SQ5, A6, Q8, Porsche Panamera, Cayenne, Macan S and more (2016-2023)
- Compare to factory tools: T40331, T40331/1, T40331/2, T40331/4, T40331/5, T40331/9, T90000, T90001, T90002

## VW/AUDI/PORSCHE



Page  
384

CTA-1131 **\$200<sup>95</sup>**  
**Cummins Paccar  
Front Crankshaft Oil Seal &  
Wear Sleeve Install Tool**

- Applications: Paccar PX-8, Cummins C Series, ISC 8.3L, and ISL 8.3L engines
- Compare to factory tools: 3165112, 3823908, 3824501

Page  
398**LOKITHOR**

LOK-AW401 **\$349<sup>95</sup>**  
**12V Jump Starter +  
Air Inflator +  
Pressure Washer +  
Power Bank**

- 2500 Peak Amps
- Engine rating: 8.5L gas, 6.5L diesel
- Battery capacity: 20,000 mAh (74 Wh)
- Equipped with short circuit prevention, reverse polarity protection, over/low voltage safeguarding, low/high temperature protection, spark-proof protection, over-current protection
- Air inflator: 150 PSI, 35 L/min
- Pressure washer: 200 PSI
- 500 lumens LED light with flashlight, strobe, and SOS modes
- 1 year warranty

Page  
406

AUT-BCT-468 **\$5574<sup>45</sup>**  
**Wireless Tablet-Based  
Battery and Electrical System  
Tester for HD Trucks**

- Tests each component of a truck's electrical charging and starting system with speed and accuracy
- Load test capacity: 120 Amp
- Battery sizes: 100-1600 CCA
- Volt ranges: Digital 0-30
- Display: 8" (1024X600)
- Leads: 4 ft., 6 gauge

Page  
412

EZR-EZNP85VT **\$93<sup>35</sup>**  
**View Through Pivoting  
Rechargeable Work Light  
with Magnetic Base**

- Flood light: 850 lumens
- Top spot light: 150 lumens
- 330° rotating light head
- View through light eliminates shadows. Great for electrical work and car stereo work
- Includes USB-C charge cord

Page  
413

MLW-2013R **\$114<sup>25</sup>**  
**Milwaukee® Rechargeable  
Low-Profile Magnetic Task Light**

- Lumens: 500/250/100
- Runtime: 4/8/12 hrs
- Unlimited vertical and horizontal light head mobility
- Magnets for metal surface mounting
- Alternative mounting feature for non-metal mounting
- IP54 dust and water resistance
- 6 ft. drop rated
- USB-C rechargeable
- 4" H x 2" W

Page  
413

MXN-00816 **\$70<sup>25</sup>**  
**Cyclops™ - Rechargeable  
Magnetic Area Light  
(Purple Body)**

- Lumens: 720/360/180
- Runtime: 2/5.5/10 hrs
- Includes USB C charge port and cord

Page  
420

EZR-EZNP45HL **\$70<sup>35</sup>**  
**2-in-1 Folding  
Headlight**

- Flood light: 450 lumens
- Spot light: 200 lumens
- Ultra comfortable headband rests around the head for easy use
- Folding arms allows for compact storage
- Durable ABS construction, easy to clean