

# Q2 2026 Promotion

## Heavy duty all-steel bar clamp, STB series

- Classic profiled rails, hardened spindles (with 19 mm hex head) and sizes up to 36".
- A real-world solution for heavy duty applications on a tighter budget.
- Comes with standard rail profile, crimped on swivel pad.
- Made in Germany.



| Product Number | Clamping Capacity<br>inch | Throat Depth<br>inch | Clamping Force<br>lbs | Approx. Weight<br>lbs | MSRP     |
|----------------|---------------------------|----------------------|-----------------------|-----------------------|----------|
| STB-12         | 12                        | 7                    | 4880                  | 12.20                 | \$277.50 |
| STB-18         | 18                        | 7                    | 4880                  | 14.70                 | \$308.90 |
| STB-24         | 24                        | 7                    | 4880                  | 16.00                 | \$340.30 |
| STB-36         | 36                        | 7                    | 4880                  | 20.60                 | \$370.20 |

## classiX® GSH all-steel lever bar clamps

- Secure, unaffected by vibrations.
- Strong – high clamping force.
- Non-slip trigger release.
- Classic profiled rail.



| Product Number | Clamping Capacity<br>inch | Throat Depth<br>inch | Clamping Force<br>lbs | Approx. Weight<br>lbs | MSRP     |
|----------------|---------------------------|----------------------|-----------------------|-----------------------|----------|
| GSH12          | 4                         | 2 3/8                | 400                   | 1.10                  | \$80.20  |
| GSH20          | 8                         | 4                    | 600                   | 2.50                  | \$95.45  |
| GSH30          | 12                        | 5 1/2                | 1110                  | 5.00                  | \$121.05 |
| GSH50          | 20                        | 4 3/4                | 1110                  | 6.25                  | \$134.50 |

## GearKlamp® bar clamps, GK series

- The first of it's kind – a unique clamping solution for difficult set-ups in tight spaces.
- Quick-shift button on the arm for broad movements of the operating jaw.
- With the operating jaw in position, the handle twists to tighten.
- To loosen the clamp, twist the clamp handle counterclockwise.



| Product Number | Clamping Capacity<br>inch | Throat Depth<br>inch | Clamping Force<br>lbs | Approx. Weight<br>lbs | MSRP    |
|----------------|---------------------------|----------------------|-----------------------|-----------------------|---------|
| GK15           | 6                         | 2 3/8                | 450                   | 1.36                  | \$34.70 |
| GK30           | 12                        | 2 3/8                | 450                   | 1.60                  | \$37.00 |
| GK45           | 18                        | 2 3/8                | 450                   | 1.85                  | \$41.85 |
| GK60           | 24                        | 2 3/8                | 450                   | 2.09                  | \$42.70 |

# Q2 2026 Promotion

## Portable digital temperature control, certified PV2412

- Lightweight portable bearing heater can move throughout your facility.
- Cross bars, heat resistant gloves, magnetic temperature probe, petroleum jelly and manual are all included.
- An easy to use keypad and controls make this simple to operate.
- Comes with 5 cross bars: ¼", ⅜", 9/16", 13/16", 1 9/16".

**4601<sup>00</sup>**



\*Bearings not included

| Product Number | Volt / Amps | Max. Weight ± lb Bearings | Min. Id | Max. Od |      | Max. Horizontal Heating Width C | Cross Section Poles |     | Temperature Control Max Reach | Time Control Max Reach | Approx. Weight Without Cross Bars | MSRP |
|----------------|-------------|---------------------------|---------|---------|------|---------------------------------|---------------------|-----|-------------------------------|------------------------|-----------------------------------|------|
|                |             |                           |         | A       | B    |                                 | D                   | E   |                               |                        |                                   |      |
| PV2412         | 120 / 13    | 44                        | ¾"      | 9 ½"    | 4 ¾" | -                               | 1 5/8"              | 302 | 0-30                          | 47.00                  | <b>\$4,601.00</b>                 |      |

## Malleable cast, ground clamp

- Quick action bar clamp.
- Also doubles as a grounding clamp for versatile work across applications.
- TP-1K includes a standard pad and a 10.5 mm grounding connection hole in the fixed jaw.

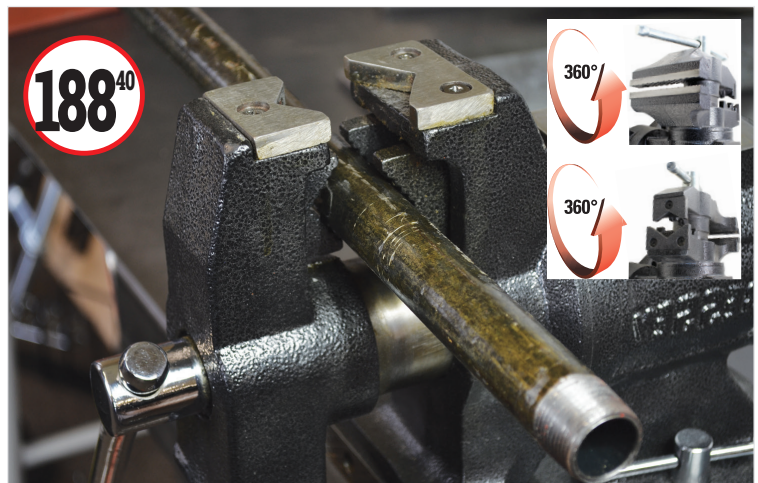
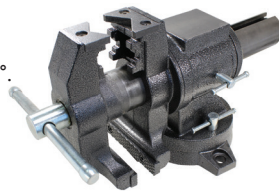


**28<sup>95</sup>**

| Product Number | Clamping Capacity | Throat Depth | Amps | Approx. Weight | MSRP           |
|----------------|-------------------|--------------|------|----------------|----------------|
|                |                   |              |      |                |                |
| TP-1K          | 6                 | 3 1/8"       | 400  | 1.65           | <b>\$28.95</b> |

## Multi-purpose vise (rotating pipe and bench vise)

- Simply bolt this vise to the top surface of your bench and lock your workpiece in place with the heavy duty jaws.
- Base swivels 360°.
- With 3 mounting holes and 2 lockdowns.
- Pipes are no problem with the serrated jaws that rotate 360°.
- Made with a ductile iron body for durability.
- Built-in anvil.



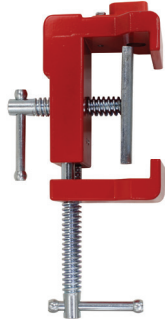
**188<sup>40</sup>**

| Product Number | Jaw Width | Jaw Opening | Throat Depth | Pipe Capacity | Approx. Weight | MSRP            |
|----------------|-----------|-------------|--------------|---------------|----------------|-----------------|
|                |           |             |              |               |                |                 |
| BV-MPV5        | 5         | 5           | 2 ¾"         | 2             | 29             | <b>\$188.40</b> |

# Q2 2026 Promotion

## Cabinetry clamp, face frames, BES8511-CB

- Designed to combine the multiple steps of face frame cabinet installation into one easy process.
- Works on stiles up to 1 1/4" thick (each).
- Integrated pilot-hole drilling guide flips out of the way so you can connect cabinets without removing the tool.



| Product Number | Clamping Capacity | Throat Depth | Jaw Width | Clamping Force | Approx. Weight | MSRP    |
|----------------|-------------------|--------------|-----------|----------------|----------------|---------|
|                | inch              | inch         | inch      | lbs            | lbs            |         |
| BES8511-CB     | 4                 | 1 1/4        | 4 1/2     | 300-600        | 3.25           | \$39.15 |

## Solid surface seaming tool

- Twin vacuum cups for clamping non-porous, solid surface material such as granite, marble, corian, plastic or glass.
- The levelling toggles ensure smooth surface joint, reduces grinding, sanding and finishing.



| Product Number | Clamping Capacity | Cup Diameter | Clamping Force | Approx. Weight | MSRP     |
|----------------|-------------------|--------------|----------------|----------------|----------|
|                | inch              | inch         | lbs            | lbs            |          |
| PS55           | 2 1/8             | 4 3/4        | 48             | 3.80           | \$302.00 |

## Extra large solid surface seaming tool

- Twin vacuum cups for clamping non-porous, solid surface material such as granite, marble, corian, plastic or glass.
- The 2K composite handle with comfort insert comes standard.



| Product Number | Clamping Capacity | Cup Diameter | Clamping Force | Approx. Weight | MSRP     |
|----------------|-------------------|--------------|----------------|----------------|----------|
|                | inch              | inch         | lbs            | lbs            |          |
| PS130          | 3 1/8             | 8 1/4        | 265            | 10.15          | \$750.00 |

# Q2 2026 Promotion



## Welding table clamp, variable throat depth, TWV16

16 mm hole diameter for up to 550 lbs of clamping force

- Clamping with variable height and adjustable throat depth
- Tempered profile rail and sliding arm for strong, dependable clamping
- Available with: high quality 2-component plastic handle; T-Bar with rounded ends (with ACME threaded spindle); or lever handle with a ratcheting mechanism for controlled, fast and vibration-proof clamping.

| Product Number | Handle Style | Clamping Capacity | Nominal Throat Depth | Clamping Force | Approx. Weight | MSRP            |
|----------------|--------------|-------------------|----------------------|----------------|----------------|-----------------|
|                |              | inch              | inch                 | lbs            | lbs            |                 |
| TWV16-20-15-2K | Composite    | 8                 | 1 3/16 - 6           | 550            | 2.50           | <b>\$86.65</b>  |
| TWV16-20-15K   | T-Bar        | 8                 | 1 3/16 - 6           | 550            | 2.34           | <b>\$86.65</b>  |
| TWV16-20-15H   | Lever        | 8                 | 2 3/8 - 6            | 550            | 2.72           | <b>\$116.30</b> |



## Welding table clamp, variable throat depth, TWV28

28 mm hole diameter for up to 1100 lbs of clamping force

- Clamping with variable height and adjustable throat depth
- Tempered profile rail and sliding arm for strong, dependable clamping.
- Available with: high quality 2-component plastic handle; T-Bar with rounded ends (with ACME threaded spindle); or lever handle with a ratcheting mechanism for controlled, fast and vibration-proof clamping

| Product Number | Handle Style | Clamping Capacity | Nominal Throat Depth | Clamping Force | Approx. Weight | MSRP            |
|----------------|--------------|-------------------|----------------------|----------------|----------------|-----------------|
|                |              | inch              | inch                 | lbs            | lbs            |                 |
| TWV28-30-17-2K | Composite    | 12                | 1 9/16 - 6 7/8       | 1100           | 4.89           | <b>\$109.20</b> |
| TWV28-30-17K   | T-Bar        | 12                | 1 9/16 - 6 7/8       | 1100           | 4.65           | <b>\$109.20</b> |
| TWV28-30-17H   | Lever        | 12                | 4 5/16 - 6 7/8       | 1100           | 5.47           | <b>\$137.40</b> |

